



Renown Street | | Plymouth | PL2 2DE

Offers over £170,000



COPP ESTATES

WHERE YOUR NEXT CHAPTER
BEGINS

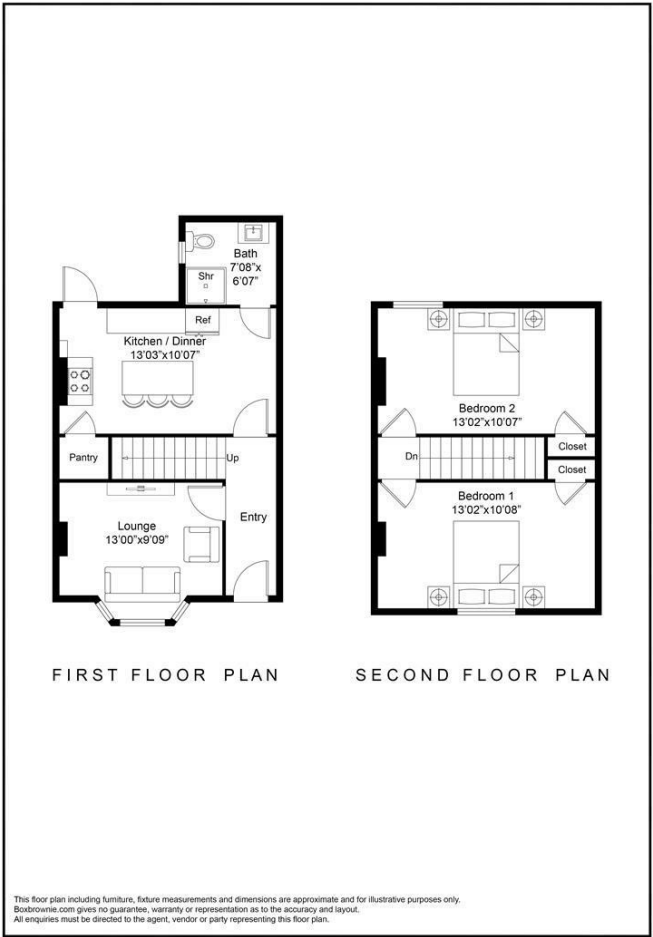
Renown Street |
Plymouth | PL2 2DE
Offers over £170,000

This charming, modernized 2-bedroom mid-terraced Victorian property in the heart of Keyham, Plymouth, effortlessly blends classic period features with contemporary design. Step inside to discover a stylish, newly-fitted kitchen complete with a central breakfast bar/island, perfect for entertaining and everyday living. The kitchen leads directly to a beautifully landscaped small courtyard, where you'll find a serene seating area beneath a graceful pergola, ideal for relaxing or dining al fresco.

The inviting lounge boasts a bay-fronted window that floods the room with natural light, highlighting the high ceilings and original coving that flows throughout the home, adding character and charm. Downstairs, you'll find a modern, newly installed bathroom featuring a bespoke walk-in shower, offering a touch of luxury and convenience.

Upstairs, there are two generously-sized double bedrooms, both offering ample space and built-in

- Bay Fronted Windows
- Oak Wood Flooring
- New Kitchen
- New Bathroom
- Well Decorated Throughout
- Landscaped Courtyard
- Two Double Bedrooms With Built In Wardrobe
- Close To Dockyard
- Victorian Property
- Double Glazing Throughout



Energy Efficiency Rating		
	Current	Potential
Very energy efficient - lower running costs		
(92 plus) A		88
(81-91) B		
(69-80) C	70	
(55-68) D		
(39-54) E		
(21-38) F		
(1-20) G		
Not energy efficient - higher running costs		
England & Wales		EU Directive 2002/91/EC

Drake Circus 1 Charles St
Plymouth
PL1 1EA
7392818622
tyler.copp@coppestates.co.uk