



Stockport Road | | Timperley | WA15 7LR

Offers over £500,000



SHEPPARD & CO



Stockport Road |  
Timperley | WA15 7LR  
Offers over £500,000

- Superb Open Plan Dining Kitchen
- Two Bathrooms And Utility Room
- Beautifully Stocked Garden  
Enjoying A Sunny Aspect
- Gated Driveway With Ample  
Parking
- Walking Distance To Altrincham  
And Metro Link
- Catchment To The Areas Finest  
Schools

This beautifully presented semi-detached family home is perfectly positioned opposite Altrincham Golf Course and just a short walk from Altrincham Town Centre.

The well-proportioned accommodation features an inviting entrance hall, a bright living room, and a superb open-plan kitchen, dining, and family area with French doors opening directly onto the rear garden. A practical utility room and a contemporary shower room complete the ground floor.

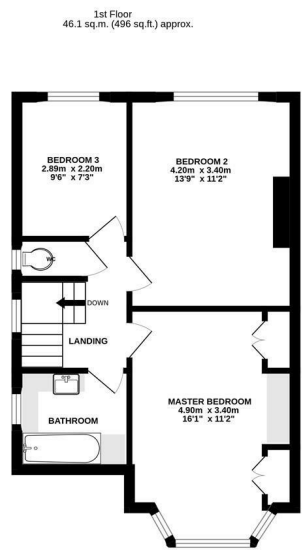
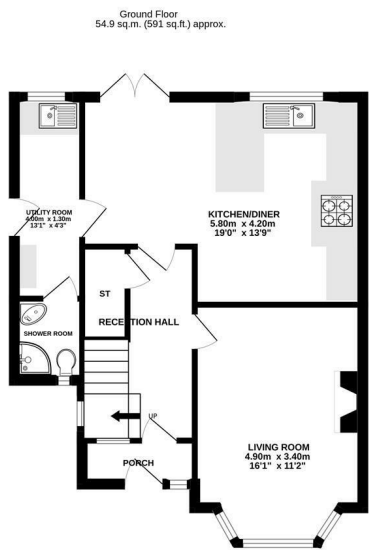
Upstairs, there are three generously sized bedrooms, a modern family bathroom, and a separate WC.

Externally, the property is approached via a gated driveway providing ample off-road parking and a neat lawned garden.

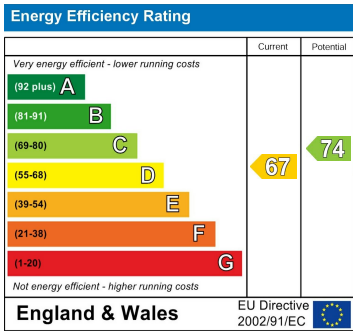
To the rear lies a beautifully landscaped, split-level garden with a patio area, established planting, and a generous lawn, all enjoying a sunny aspect. At the far end, a stylish garden room offers a versatile retreat.

A beautifully presented, extended semi detached home.

Well laid out and spacious accommodation



TOTAL FLOOR AREA: 101.0 sq.m. (1087 sq.ft.) approx.  
Whilst every attempt has been made to ensure the accuracy of the floorplan contained here, measurements of doors, windows, rooms and any other items are approximate and no responsibility is taken for any error, omission or mis-statement. This plan is for illustrative purposes only and should be used as such for any prospective purchase. The services, systems and appliances shown have not been tested and no guarantee as to their operability or efficiency can be given.  
Made with Metropix 12/2025



1st Floor, 179 Ashley Road  
Hale  
Altrincham  
WA15 9SD  
0161 928 3773  
sales@sheppardco.co.uk  
sheppardco.co.uk