



Rotherhithe Street, SE16

£400,000

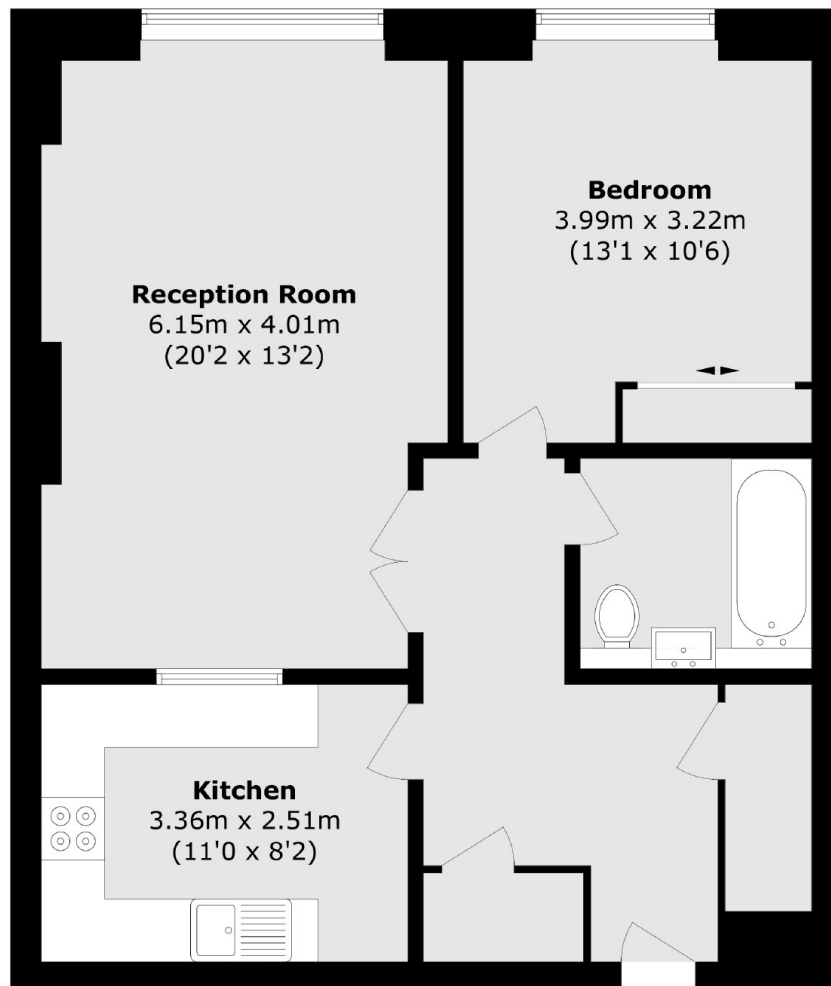
A large one-bedroom flat, within a desirable Grade II listed waterfront warehouse conversion, boasts many stunning features, such as high ceilings & lots of exposed brickwork. The property offers a generous living space, fully fitted kitchen, master bedroom with built-in wardrobes & ample storage. The beautiful historic building also offers concierge, gym, swimming & spa facilities.

Globe Wharf, set along the Thames Path, is just 0.6 miles from Rotherhithe & 0.8 miles from Canada Water stations, with excellent bus & ferry links. A wide range of shops, cafés, riverside pubs & restaurants are close by.

Features

- Large One Bedroom Flat
- Period Features
- Excellent Condition
- Concierge, Gym & pool/spa
- Private Parking

Rotherhithe Street, London, SE16



Total area (approx.): 64.2 sq. m (691.0 sq. ft)