



Quebec Way, SE16

£3,700 Per week

A contemporary and bright three double bedroom flat within Canada Water's premier development. This immaculately presented property is located close to the Jubilee Line, but within a very peaceful setting.

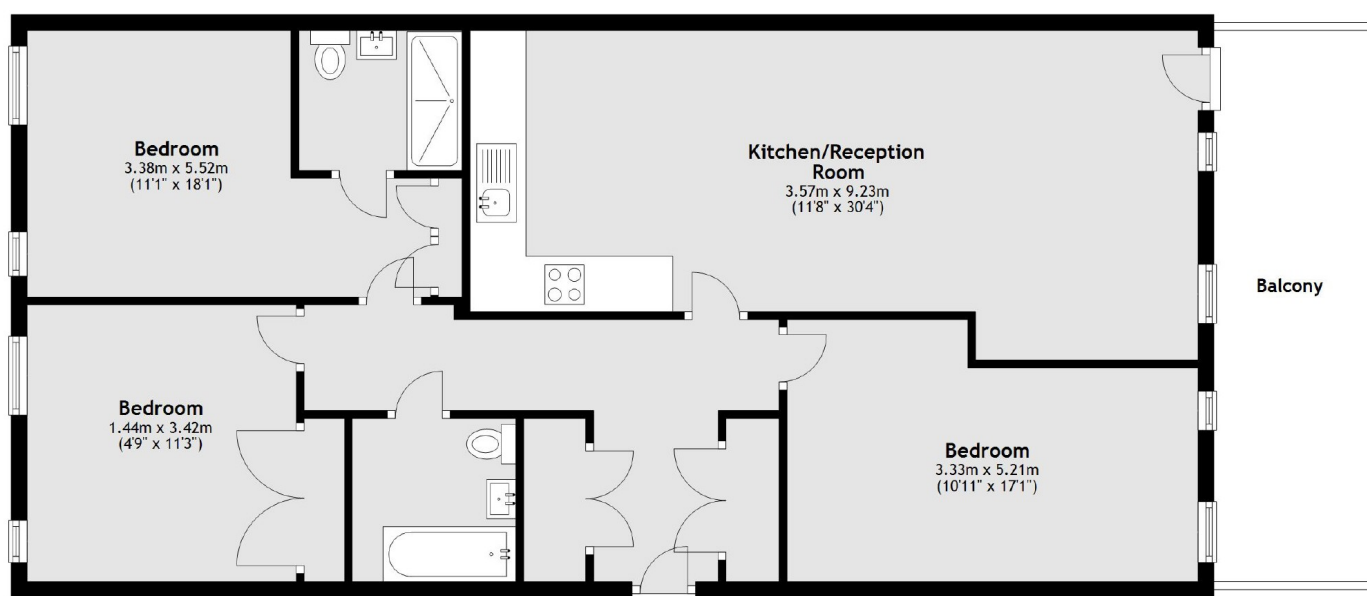
Maple Quays is an upmarket new build development in the heart of Surrey Quays. Canada Water Station which is on the Jubilee Line and the London Overground is just short walk from the property.

Features

- Three Double Bedrooms
- Two Bathrooms
- Furnished
- Wood Flooring
- Balcony
- Canada Water

Quebec Way, London, SE16

Third Floor



Total area: approx. 104.1 sq. metres (1120.9 sq. feet)

Dexters

Canada Water
Montreal House
Surrey Quays Road
London
Lettings
020 7650 5145

Energy Rating: B. We aim to make our particulars both accurate and reliable. However they are not guaranteed; nor do they form part of an offer or contract. If you require clarification on any points then please contact us, especially if you're traveling some distance to view. Please note that appliances and heating systems have not been tested and therefore no warranties can be given as to their good working order.

 **RICS** | Regulated
Estate Agent
and Letting Agent

[dexters.co.uk](https://www.dexters.co.uk)