



Rennie Estate, SE16

£275,000

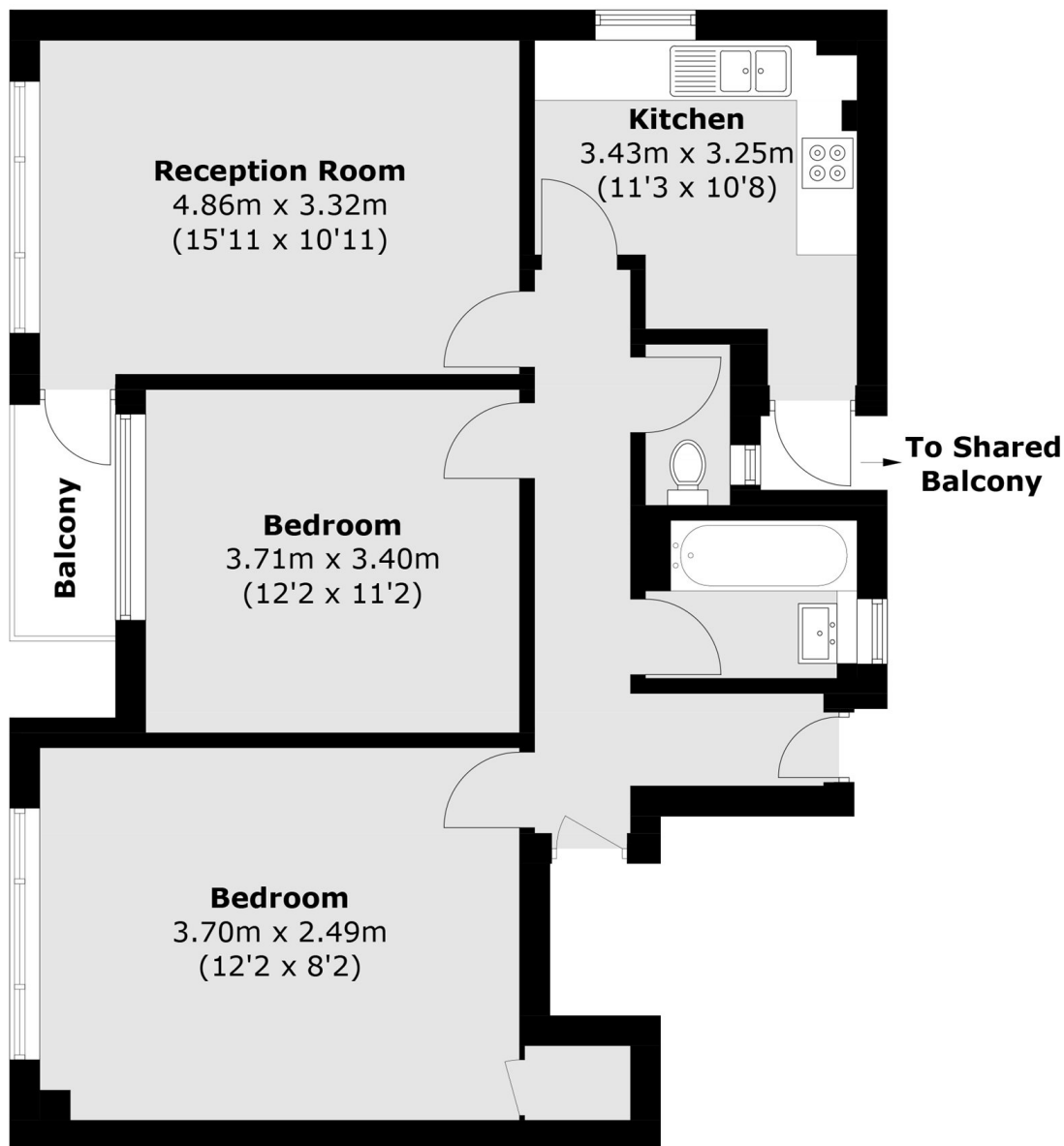
CASH BUYERS ONLY. Situated within a quiet development and offering fantastic views of the City, Shard & St Pauls, this bright and airy two double bedroom flat is in fantastic condition and boasts a large living space, separate kitchen, private balcony, ample storage and parking.

Landmann House is located 0.1 miles from South Bermondsey station and 0.7 miles from Bermondsey station offering excellent transport links to all of London. A wide range of shops, cafés and restaurants and the Canada Water masterplan are moments away.

Features

- Two Double Bedrooms
- Fantastic Views
- Private Balcony
- Separate Kitchen
- Parking
- Chain Free

Rennie Estate, London, SE16



Total area (approx.): 71.7 sq. m (771.8 sq. ft)
Balcony: 2.3 sq. m (24.7 sq. ft)