



## Varcoe Road, SE16

### £475,000

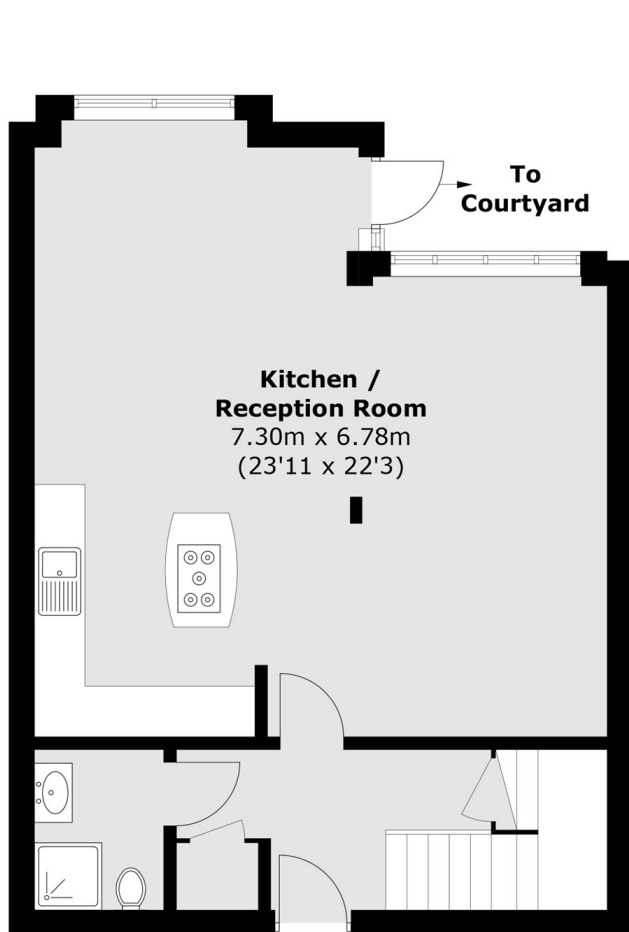
Split over two floor and spanning over 1,100sqft, this two double bedroom flat is in fantastic condition and boasts a large open plan kitchen living space, two bathrooms, private terrace and balcony.

Crown Place Apartments is located only 0.4 miles from South Bermondsey station and one mile from Bermondsey tube station offering excellent transport links to all of London. A wide range of artisan shops, delis and cafés are also close by.

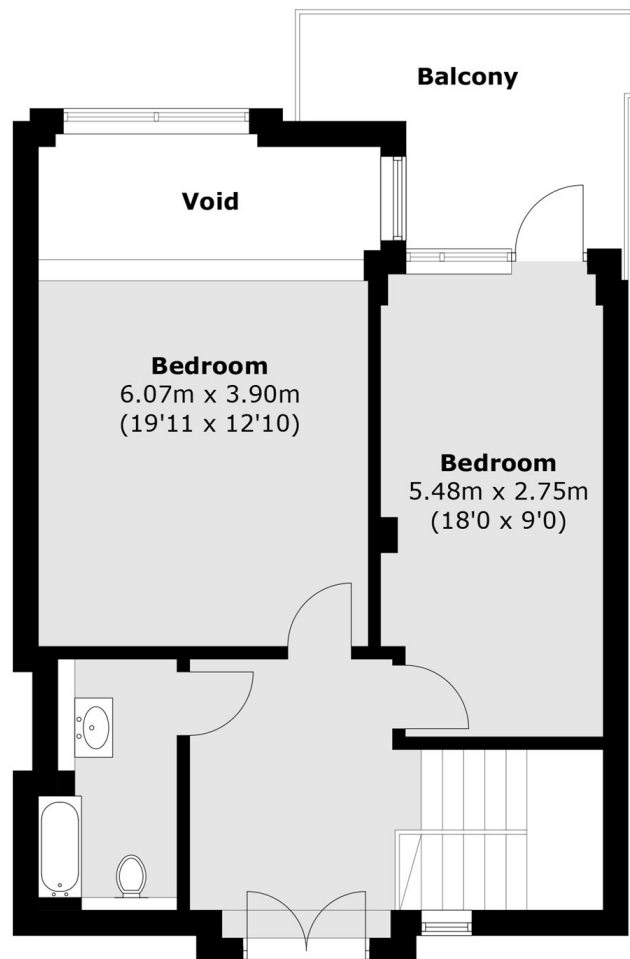
### Features

- Two Double Bedrooms
- Two Bathrooms
- Split Level
- Gated Development
- Chain Free
- Fantastic Condition

# Varcoe Road, London, SE16



**Ground Floor**



**First Floor**

Total area (approx.): 108.1 sq. m (1,163.5 sq. ft) (Excluding Void)  
Balcony area : 8.9 sq. m (95.8 sq. ft)