



**Rotherhithe Street, SE16**

**£2,500,000**

**Dexters**





## Rotherhithe Street, SE16

Offering a 360 degree view of London and over 1,700sqft of outdoor space, this spectacular property offers a huge open plan kitchen living space, four double bedrooms, two bathrooms, utility room and parking.

Arranged over 2,200sqft, this split level penthouse apartment offers a huge open plan kitchen living space with spectacular views across the London skyline.

The property boasts four double bedrooms and two bathrooms along with ample built in storage. The property also boasts three additional balconies.

Located in the heart of Rotherhithe village, this one of a kind apartment is surrounded by green space, historic riverside eateries including the Mayflower Pub and small independent deli's.

Rotherhithe station is located just 0.2 miles from the apartment and Canada Water station is just 0.3 miles from the flat offering fantastic transport links to all of London.

### Features

- Four Bedrooms
- Two Bathrooms
- Incredible Roof Terraces
- Secure Parking
- Long Lease
- Fantastic Location





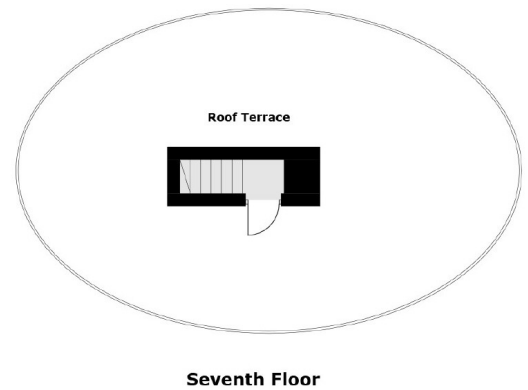
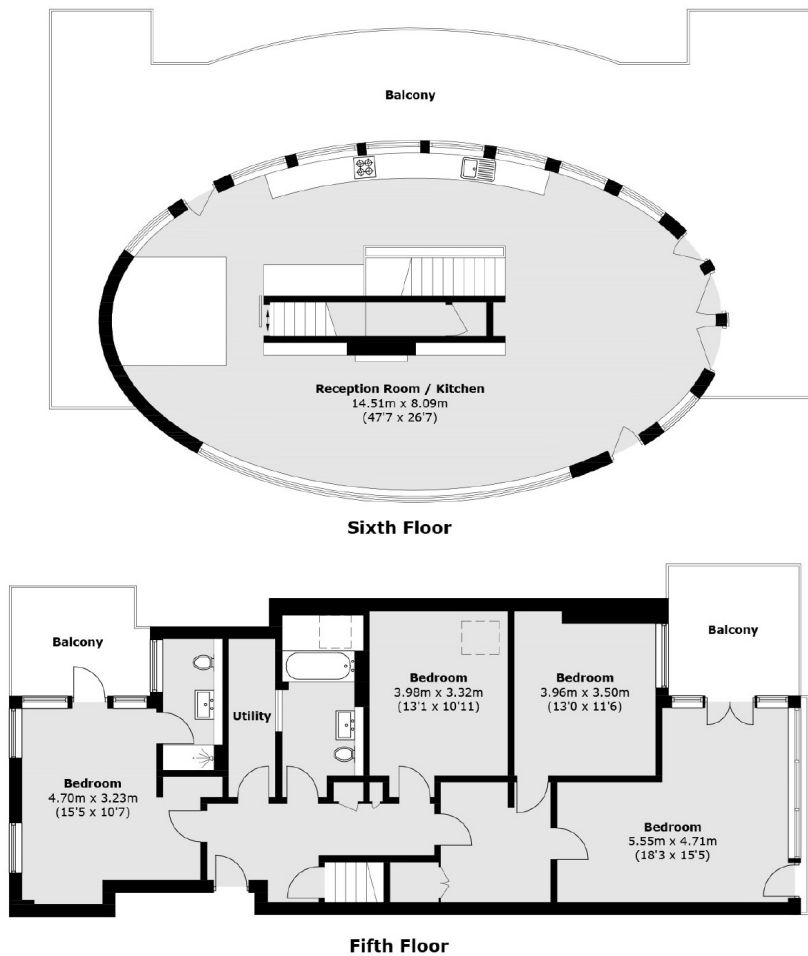








# Rotherhithe Street, London, SE16



Total area (approx.): 204.8 sq. m (2,204.4 sq. ft)  
Balcony / Roof Terrace area : 166.2 sq. m (1,789.0 sq. ft)