



New Place Square, SE16

£475,000

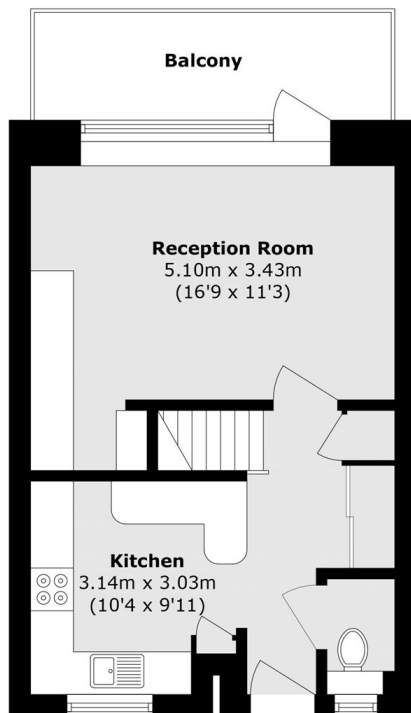
Arranged over two floors, this three bedroom flat is immaculately presented throughout and boasts a large kitchen, separate reception room, two private balconies, modern bathroom, guest WC and ample storage.

New Place Square is located just 0.3 miles from Bermondsey station and is moments from Southwark Park. A wide range of shops, café's, artisan food markets and restaurants are moments away.

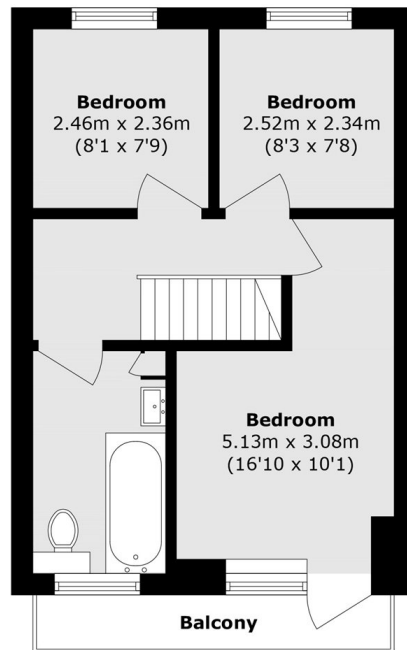
Features

- Three Bedrooms
- Split Level
- Two Private Balconies
- Fantastic Location
- Parking Available

New Place Square, London, SE16



Fifth Floor



Sixth Floor

Total area (approx.): 77.7 sq. m (836.4 sq. ft)
Balcony area (approx.): 11.3 sq. m (121.6 sq. ft)