



Providence Square, SE1

£850,000

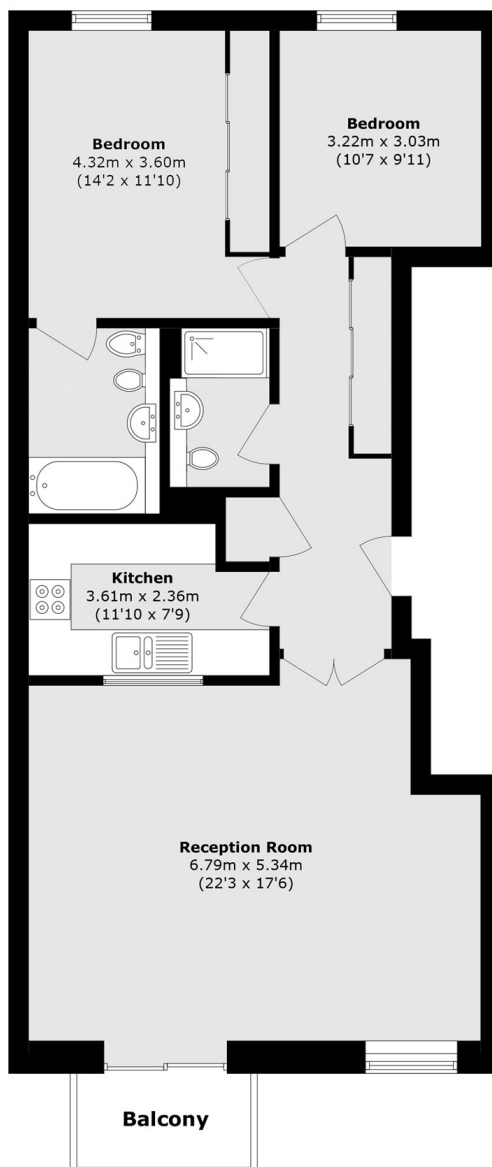
Offering stunning views of the river and Providence Square's Japanese Water Gardens, this immaculately presented flat boasts two double bedrooms, two bathrooms, a very large reception room, separate kitchen, a private balcony, secure parking, residents' gym and concierge.

Providence Square is located only 0.4 miles from Bermondsey station and 0.7 miles from London Bridge station. A wide range of restaurants, cafés, artisan delis and trendy food markets are moments away.

Features

- Two Double Bedrooms
- Two Bathrooms
- Private Balcony
- Allocated Parking
- Japanese Water Gardens
- Concierge And Gym Facilities

Providence Square, London, SE1



Total area (approx.): 93.9 sq. m (1010.7 sq. ft)

Balcony area (approx.): 3.6 sq. m (28.7 sq. ft)