



## Jamaica Road, SE1

£425,000

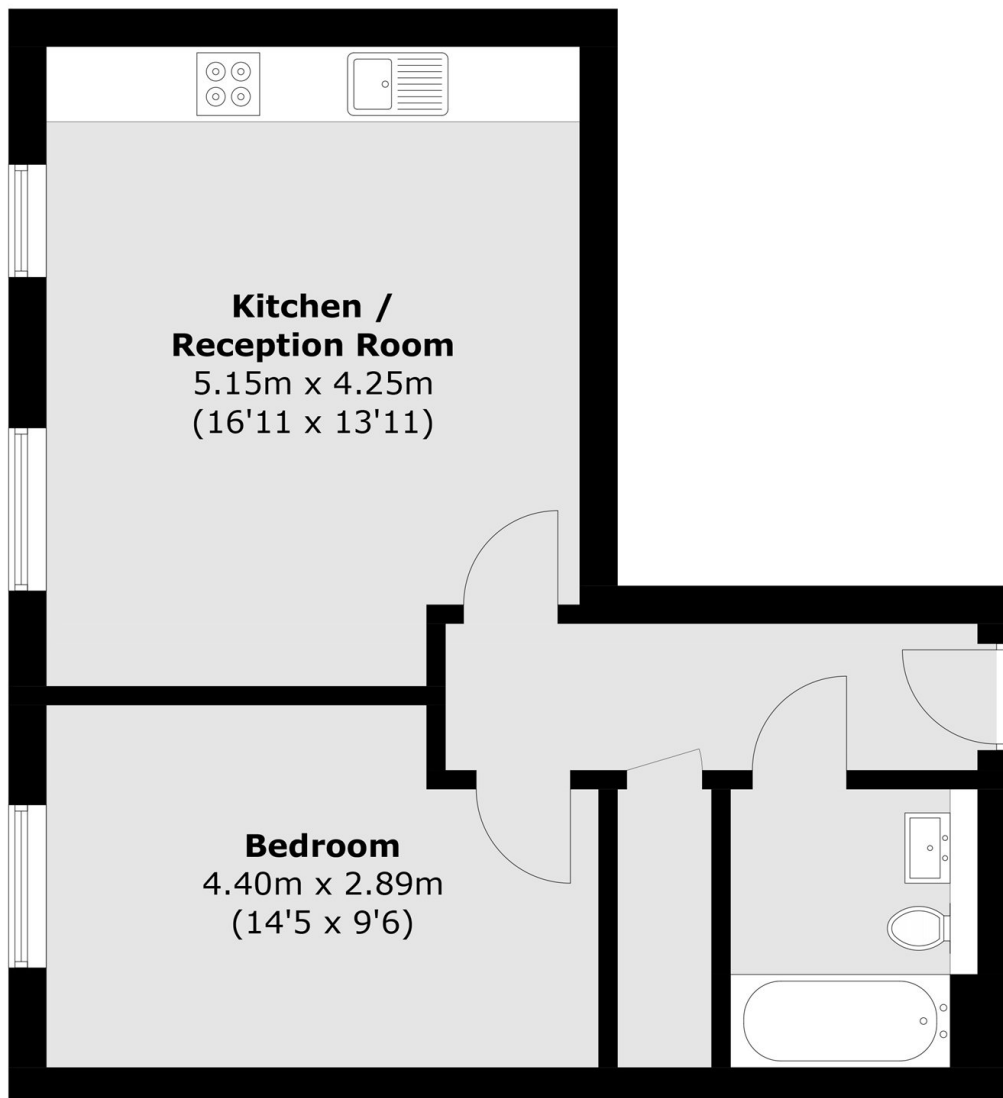
Situated in this sought after development, this bright and airy one double bedroom flat is in excellent condition and boasts a large open plan kitchen living space, modern bathroom and communal roof terrace.

Gedling Court is surrounded by artisan food markets, shops and delis and is located only 0.4 miles from Bermondsey station and 0.6 miles from London Bridge offering fantastic transport links to all of London.

### Features

- One Double Bedroom
- Excellent Condition
- Large 4th Floor Roof Terrace
- Bike Storage
- Great Views
- Permit Parking

# Jamaica Road, London, SE1



Total area (approx.): 45.9 sq. m (494.1 sq. ft)