



Redriff Road, SE16

£2,700 Per calendar month

This three bedroom house is ideally located in the heart of Rotherhithe, offering a perfect blend of comfort, space, and convenience. The property has a private rear garden and a welcoming front garden, ideal for outdoor relaxation and entertaining. This is a fantastic opportunity to rent a spacious home in a prime location, just a short walk from local amenities, schools, and excellent transport links.

Located within walking distance to both Canada Water and Rotherhithe Stations, short walk to Russia Dock Woodlands, Stave Hill, Surrey Docks Farm and Southward Park. The property is also within close proximity to Redriff Primary School.

Features

- Three Bedrooms
- Two Bathrooms
- Furnished
- Garden
- Separate Kitchen



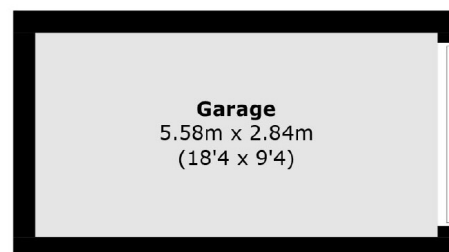
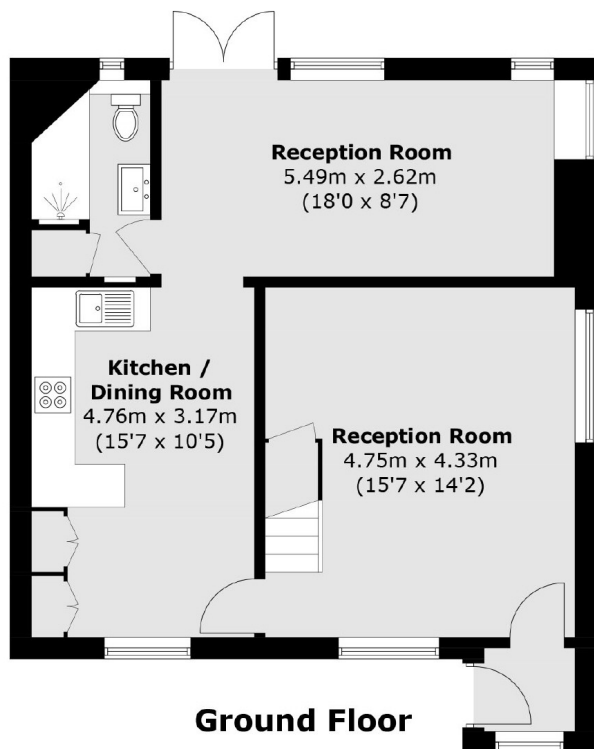
Redriff Road, SE16

A thoughtfully designed extension has created a second reception room and a modern downstairs shower room, with patio doors opening directly onto the rear garden bringing in plenty of natural light.

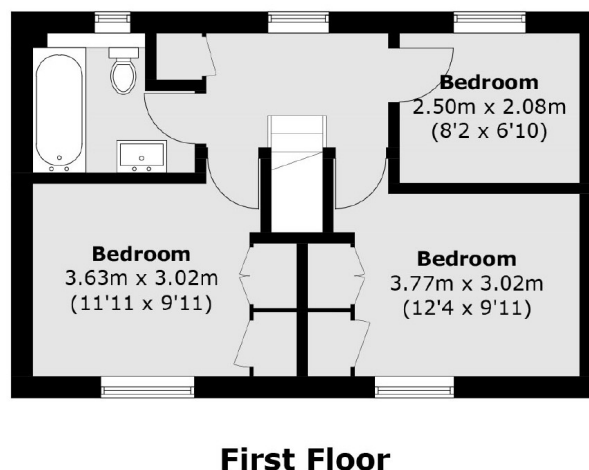
The kitchen is situated between the two reception rooms, offering a practical layout for both everyday living and hosting guests. Upstairs, there are three bedrooms and a family bathroom.



Redriff Road, London, SE16



(Not Shown In Actual
Location / Orientation)



Total area (approx.): 95.5 sq. m (1,028.0 sq. ft)
Garage: 15.8 sq. m (170.1 sq. ft)