



Cherry Garden Street, SE16

£350,000

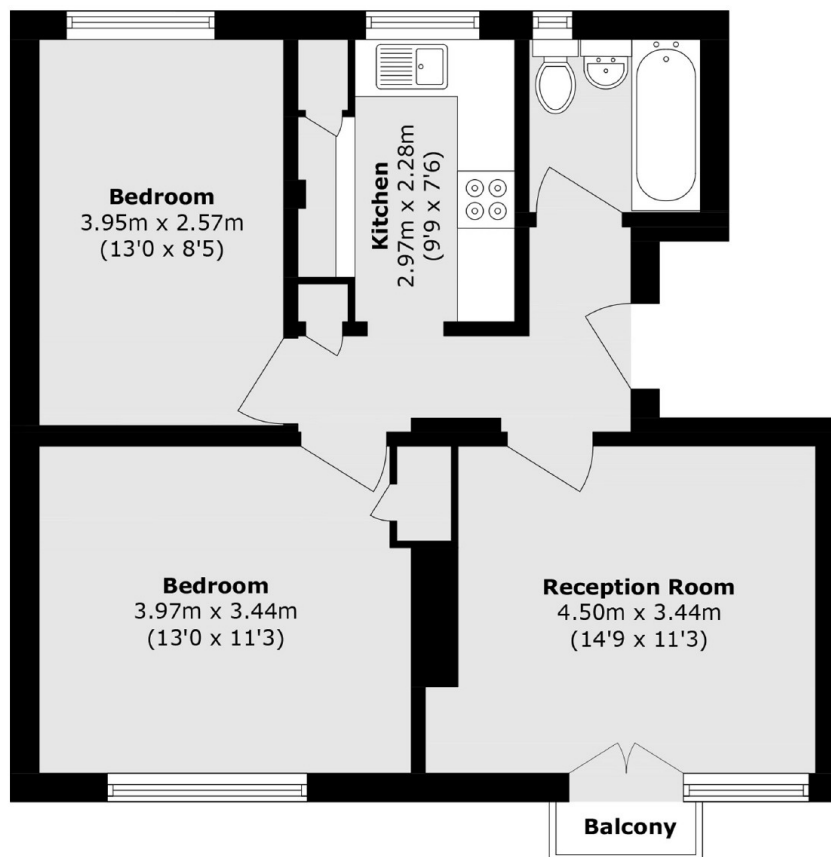
Located on a quiet leafy street, this two double bedroom flat is in lovely condition and boasts a large living space, separate kitchen, additional secure storage, private balcony and parking.

Burton House is located only 0.2 miles from Bermondsey station offering excellent transport links to all of London. A wide range of shops, cafés, restaurants and trendy food markets are also close by.

Features

- Two Double Bedrooms
- Chain Free
- Fantastic Location
- Parking Available
- Long Lease
- Private Balcony

Cherry Garden Street, London, SE16



Total area (approx.): 56.0 sq. m (602.8 sq. ft)

Balcony area (approx.): 0.8 sq. m (8.6 sq. ft)