



Marden Square, SE16

£280,000

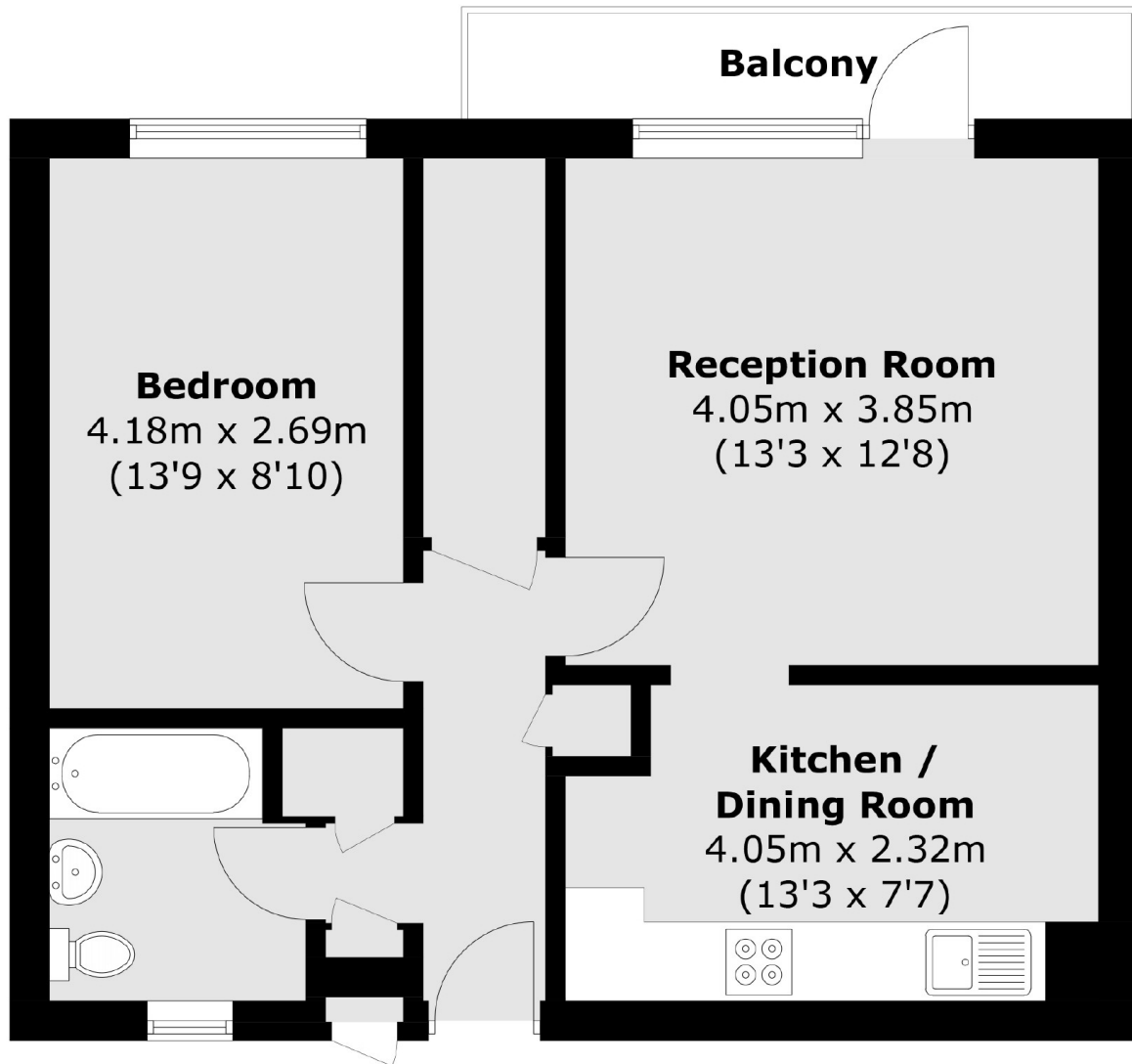
Situated moments from Southwark Park, this one double bedroom flat is immaculately presented throughout and boasts a spacious semi- open plan kitchen living area, modern bathroom and private balcony.

Marden Square is located only 0.2 miles from Bermondsey station and is moments from Southwark Park. A wide range of shops, café's, artisan food markets and restaurants are moments away.

Features

- One Double Bedroom
- Fantastic Condition
- Private Balcony
- Chain Free
- Excellent Location
- Long Lease

Marden Square, London, SE16



Total area (approx.): 51.0 sq. m (549.0 sq. ft)
External Cupboard: 0.1 sq. m (1.1 sq. ft)
Balcony: 4.0 sq. m (43.0 sq. ft)