



The Grange, SE1

£500,000

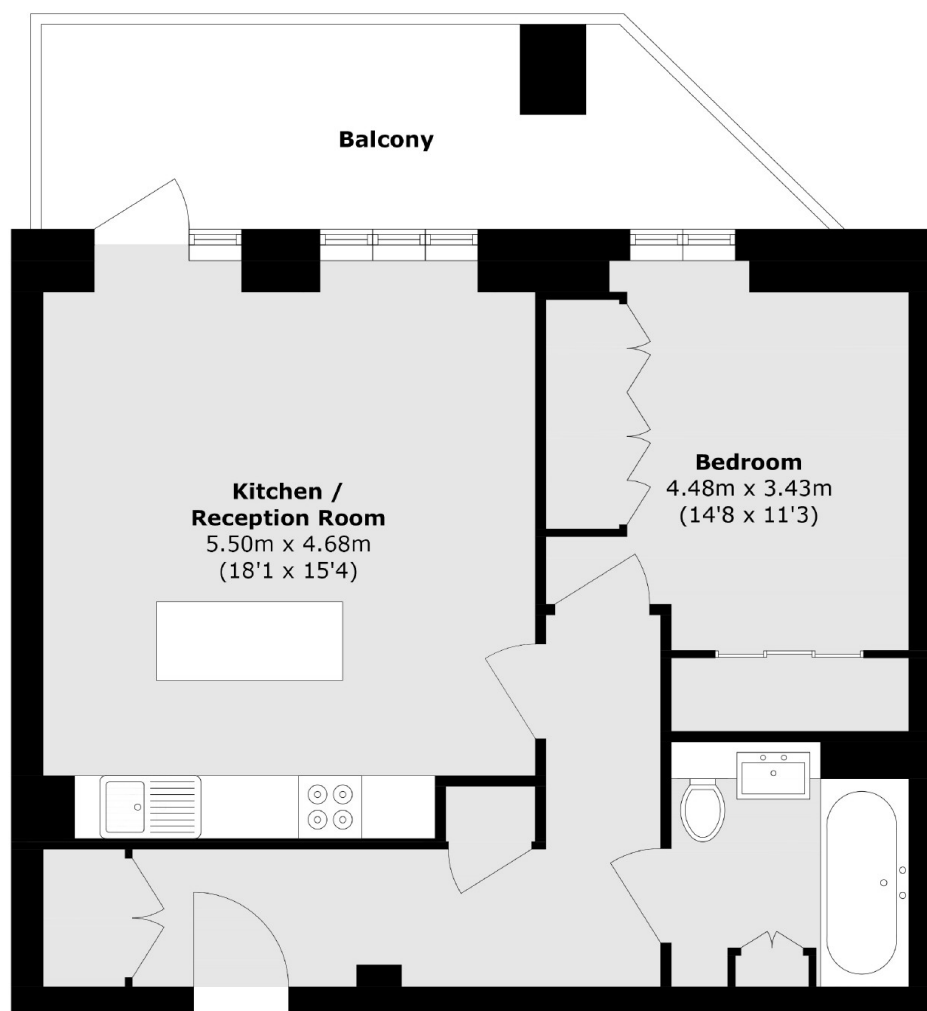
Situated within this extremely sought after development, this one double bedroom flat is in stunning condition and boasts a large open plan kitchen/ living space, modern bathroom, private balcony, communal gardens and concierge facilities.

Corio House is moments from Maltby Street Market and Bermondsey Street and is surrounded by artisan shops, cafés and delis. Bermondsey station is only 0.6 miles away and London Bridge is 0.8 miles away.

Features

- One Double Bedroom
- Private Balcony
- Concierge Facilities
- Fantastic Location
- Stunning Condition
- Communal Gardens

The Grange, London, SE1



Total area (approx.): 56.8 sq. m (611.3 sq. ft)

Balcony area (approx.): 12.1 sq. m (130.2 sq. ft)