



## Grange Road, SE1

### £690,000

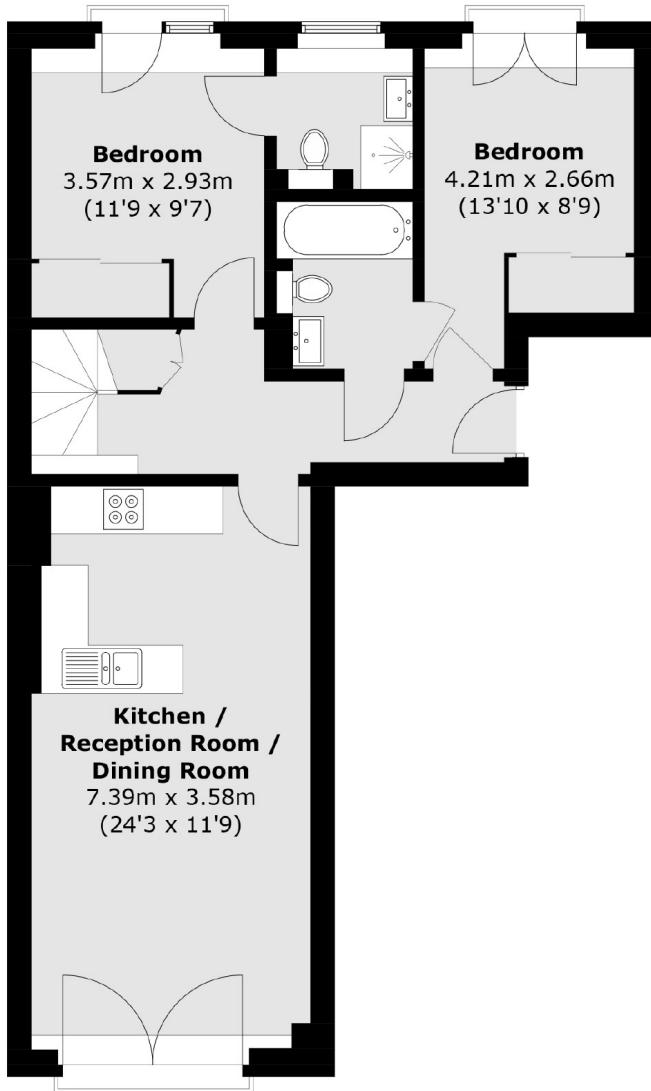
Offering a large private roof terrace, this two double bedroom split level flat is in fantastic condition and offers a large open plan kitchen living space, two bathrooms, additional reception room leading to the terrace and ample storage.

Grange Road is located 0.6 miles from Bermondsey Underground offering excellent transport links to Canary and the rest of London. Maltby Street Market, Bermondsey Street & Shad Thames are all nearby.

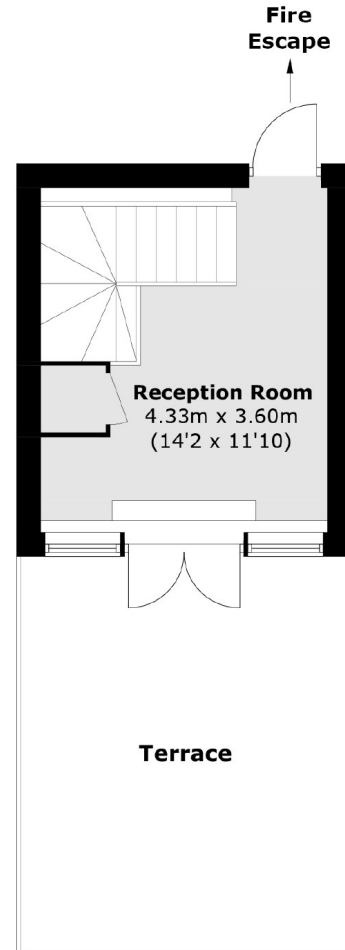
### Features

- Two Double Bedrooms
- Two Bathrooms
- Private Roof Terrace
- Chain Free
- Excellent Condition
- Valid EWS1 Form

# Grange Road, London, SE1



**Second Floor**



**Third Floor**

Total area (approx.): 80.0 sq. m (861.0 sq. ft)  
Terrace: 20.3 sq. m (218.5 sq. ft)