



Sherwood Gardens, SE16

£585,000

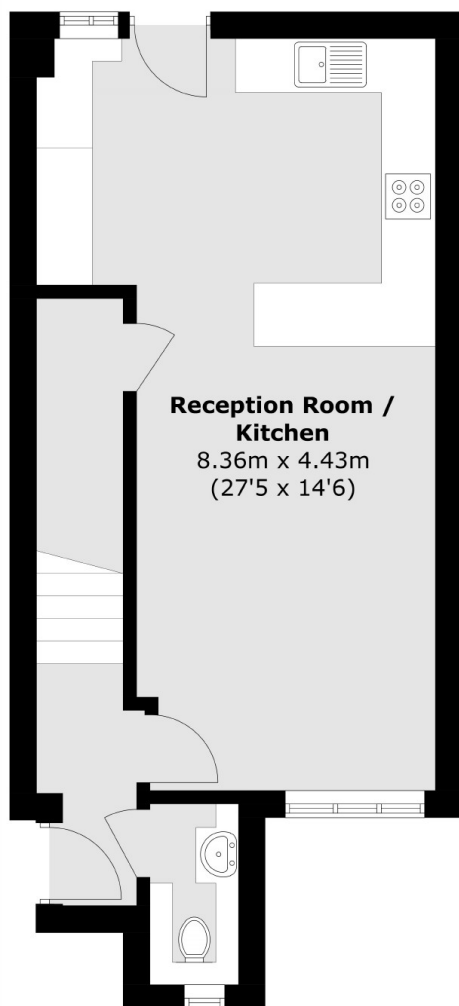
Located in a quiet cul-de-sac, this three bedroom house is in stunning condition and boasts a large open plan kitchen living space with doors leading to a beautiful private garden, downstairs WC, ample storage and off street parking.

Sherwood Gardens is located is only 0.4miles from South Bermondsey station offering excellent transport links to all of London. A wide range of artisan shops, delis and cafés are also close by.

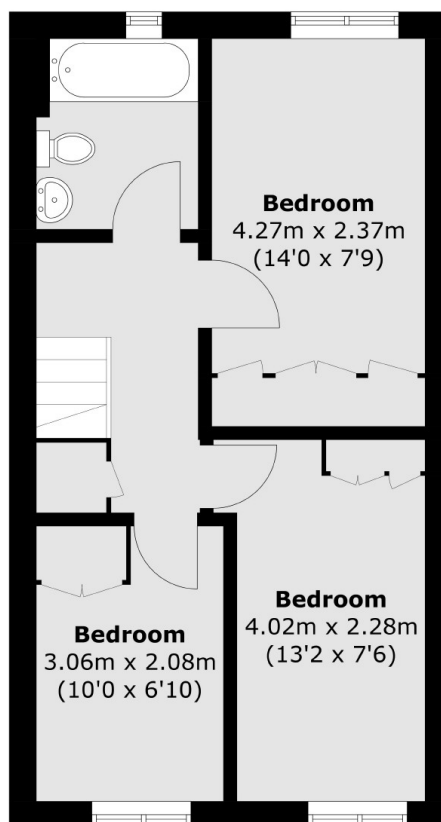
Features

- Three Bedrooms
- Freehold House
- Private Off Street Parking
- Private Garden
- Excellent Condition
- Loft Storage
- End of Terrace

Sherwood Gardens, London, SE16



Ground Floor



First Floor

Total area (approx.): 77.3 sq. m (832.1 sq. ft)