



## Lynton Road, SE1 £525,000

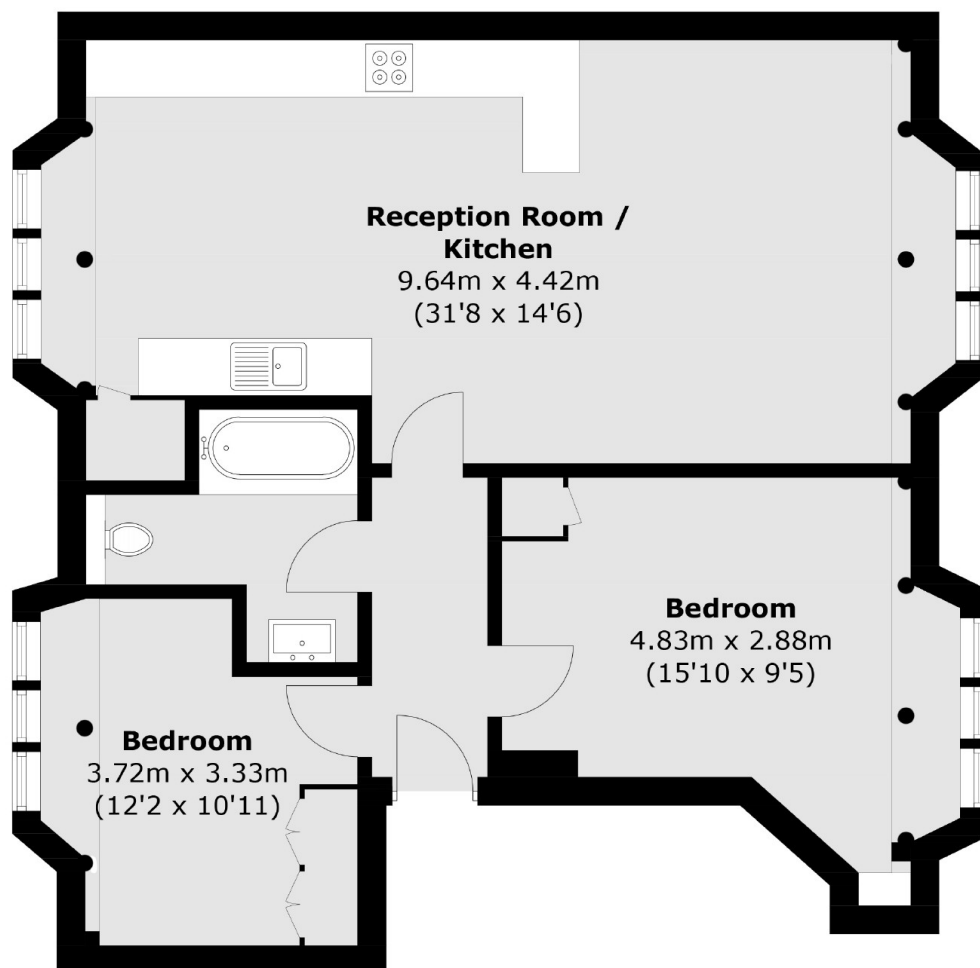
Situated within a stunning Grade II Listed church conversion, this two double bedroom flat is in fantastic condition and boasts a large kitchen/ living space, modern bathroom ample storage and parking.

St Augustines Court is located 0.3 miles from South Bermondsey station and 0.7 miles from Bermondsey station offering excellent transport links to all of London.

### Features

- Two Double Bedrooms
- Chain Free
- Stunning Condition
- Period Features
- Excellent Location
- Parking Available

Lynton Road,  
London, SE1



Total area (approx.): 78.9 sq. m ( 849.3 sq. ft)

**Dexters**

Canada Water  
Montreal House  
Surrey Quays Road  
London  
Sales  
020 7650 5144

Energy Rating: C. We aim to make our particulars both accurate and reliable. However they are not guaranteed; nor do they form part of an offer or contract. If you require clarification on any points then please contact us, especially if you're traveling some distance to view. Please note that appliances and heating systems have not been tested and therefore no warranties can be given as to their good working order.

 **RICS** | Regulated  
Estate Agent  
and Letting Agent

[dexters.co.uk](https://www.dexters.co.uk)