



George Beard Road, SE8

£325,000

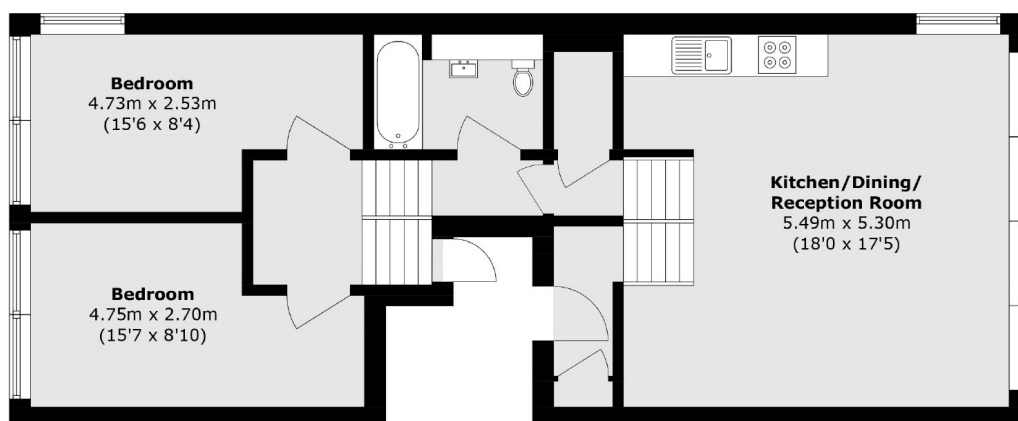
Offering incredible views this two double bedroom flat is in stunning condition and has a large open plan kitchen living space, modern bathroom and is being sold chain free.

Located within a mile of Canada Water station and Surrey Quays station, Aragon Tower offers an easy commute to Canary Wharf and The City. Thames Clipper river boat is close by, providing services to Central London and Greenwich.

Features

- Two Double Bedrooms
- Concierge Facilities
- Excellent Condition
- Incredible Views
- Riverside location
- Valid EWS1 Form

George Beard Road, London, SE8



Total area (approx.): 67.4 sq. m (725.4 sq. ft)