



## Varcoe Road, SE16

£435,000

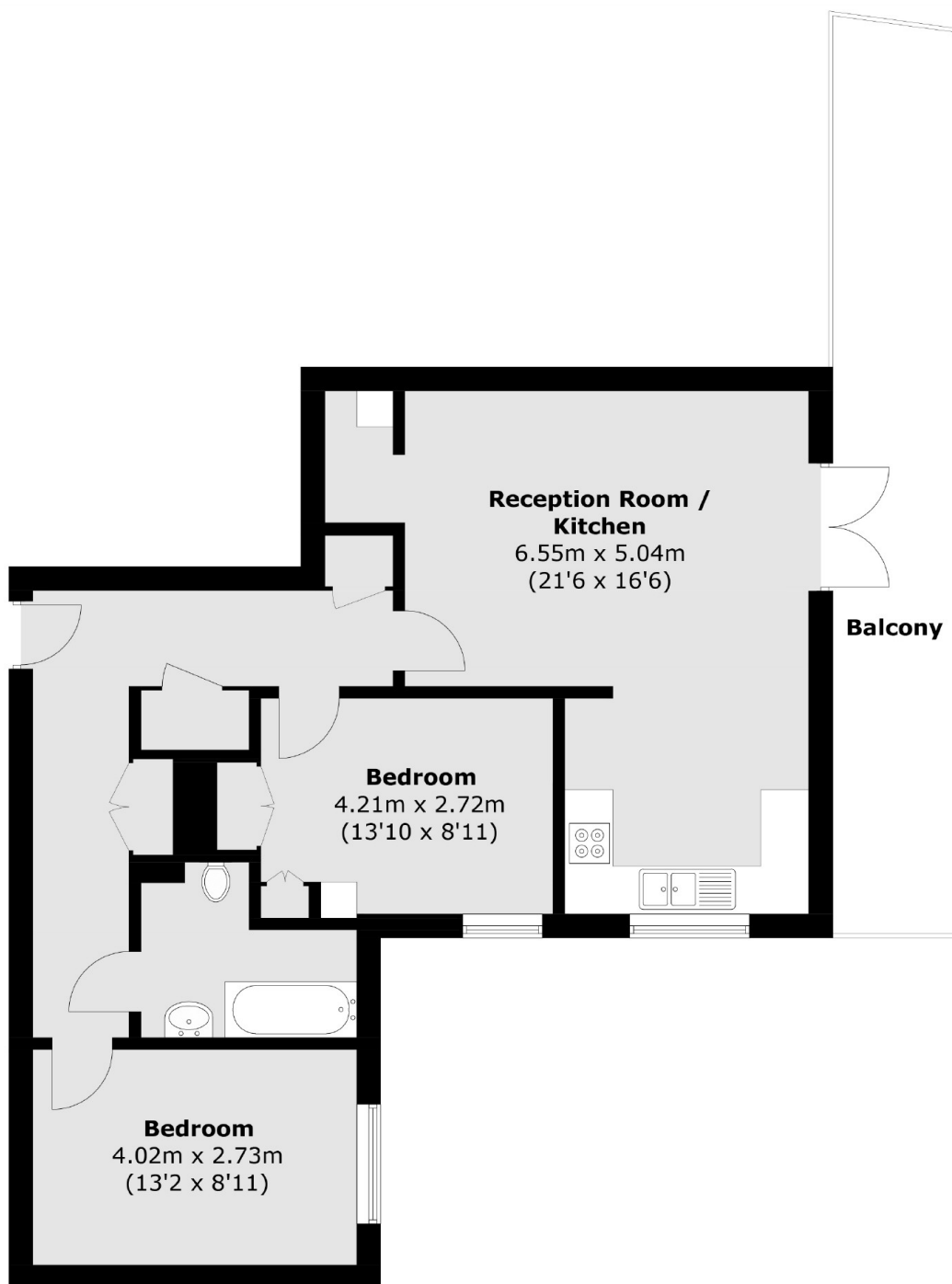
Offered with NO CHAIN and boasting incredible views of Canary Wharf, the City of London and as far as the London Eye, this two double bedroom top floor apartment is immaculately presented throughout and boasts a large private terrace, open plan kitchen/ living space, home office space, built-in and attic storage & modern bathroom.

Batwa House is located 0.2 miles from South Bermondsey station, 0.7 miles from Surrey Quays station and 0.8 miles from Bermondsey tube station. A wide range of artisan shops, delis and cafés are also close by.

### Features

- No Chain
- Two Double Bedrooms
- Views Of Canary Wharf And The City Of London
- Large Private Terrace
- Excellent Condition
- Close To Transport

# Varcoe Road, London, SE16



Total area (approx.): 72.6 sq. m ( 781.4 sq. ft)  
Balcony : 17.7 sq. m ( 190.5 sq. ft)

## Dexters

Canada Water  
Montreal House  
Surrey Quays Road  
London  
Sales  
020 7650 5144

Energy Rating: C. We aim to make our particulars both accurate and reliable. However they are not guaranteed; nor do they form part of an offer or contract. If you require clarification on any points then please contact us, especially if you're traveling some distance to view. Please note that appliances and heating systems have not been tested and therefore no warranties can be given as to their good working order.

 **RICS** | Regulated  
Estate Agent  
and Letting Agent

[dexters.co.uk](https://www.dexters.co.uk)