

Blenheim House

Tower Bridge, SE1

Dexters



About the property

An exceptional two double bedroom apartment located in the prestigious One Tower Bridge development, on the ninth floor of Balmoral House. This property offers luxury riverside living with impressive views of Tower Bridge and the city.

Featuring a spacious open plan kitchen and living area with high end built-in appliances, sleek modern bathrooms, and a spacious private balcony. It has been finished

to an immaculate standard throughout, combining contemporary design with comfort and style.

Residents benefit from a 24-hour concierge, access to a state-of-the-art gym, swimming pool, spa, and well-maintained communal areas. The vibrant riverside location is surrounded by excellent cafés, restaurants, and cultural landmarks. London Bridge station is moments away, offering excellent transport links across London.



Key features

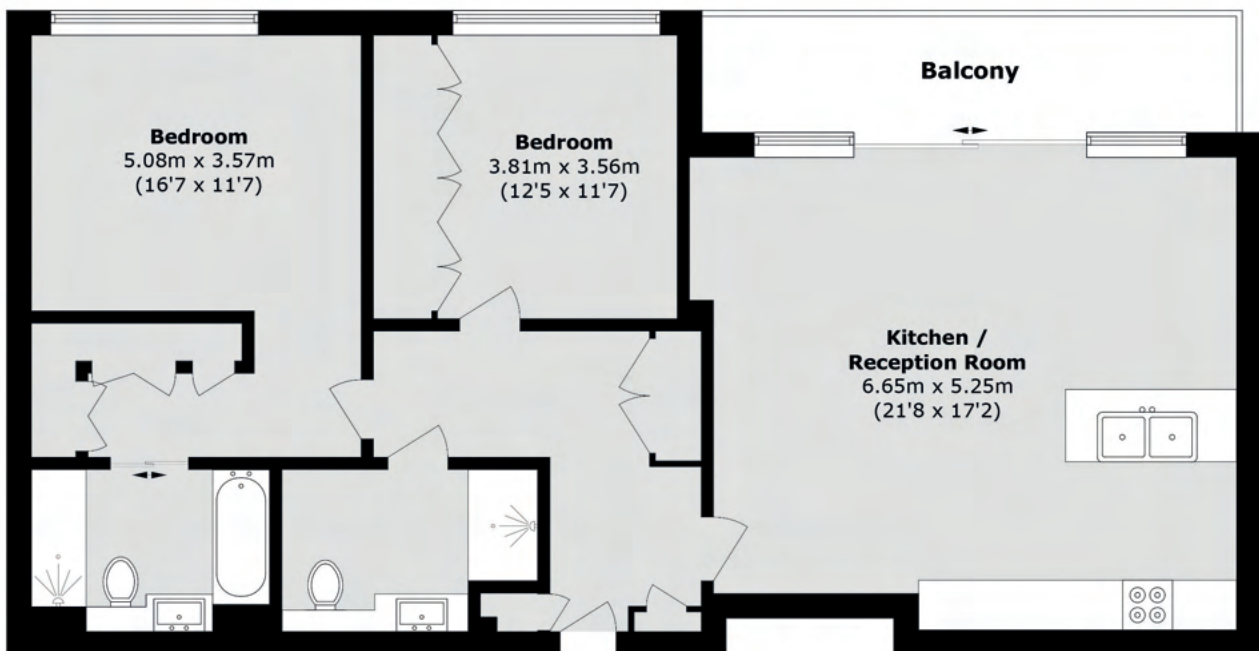
One Tower Bridge
Two Double Bedrooms
24-Hour Concierge
Incredible Views
Gym and Spa Facilities
Excellent Condition











TOTAL APPROX. FLOOR AREA 1002.1 SQ. FT (93.1 SQ. M)
BALCONY AREA 31.5 SQ. FT (9.6 SQ. M)

Energy Rating: B. We aim to make our particulars both accurate and reliable. However they are not guaranteed; nor do they form part of an offer or contract. If you require clarification on any points then please contact us, especially if you're traveling some distance to view. Please note that appliances and heating systems have not been tested and therefore no warranties can be given as to their good working order.



Dexters Canada Water
Surrey Quays Road,
London, SE16 7AQ
020 7650 5144

Dexters