



Rotherhithe Street, SE16

£1,250,000

Offering spectacular views, this five double bedroom house is beautifully presented and boasts a large living space, kitchen/ diner, additional reception room, ample storage, private garden and balcony overlooking the river.

The house is located only 0.2 miles from Rotherhithe Station and 0.3 miles from Canada Water station, offering excellent transport links to all of London. A wide range of trendy food markets and restaurants are close by.

Features

- Five Bedrooms
- Four Bathrooms
- Incredible Views
- Private Garden and Balcony
- Off Street Parking
- Fantastic Location



Rotherhithe Street, SE16

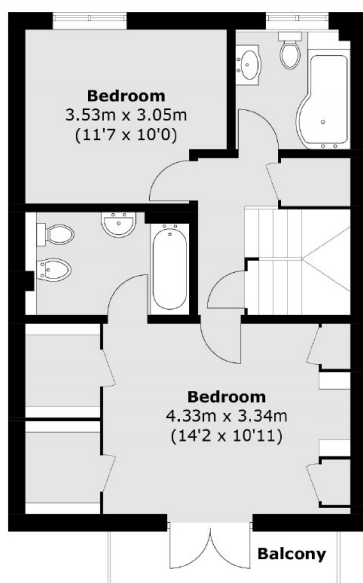
Arranged over almost 2,000sqft, this substantial family home spans three floors and offers five double bedrooms, two of which have en-suite bathrooms. There are also two additional bathrooms.

The living space offers a beautiful bay window with views of the river and the master bedroom boasts a gorgeous balcony also overlooking the river and The City.

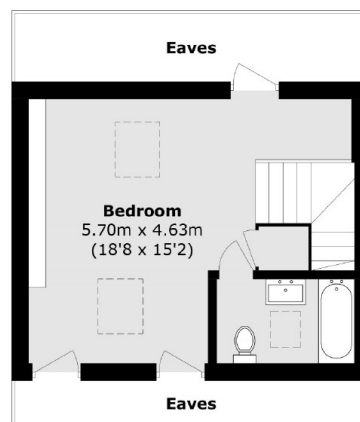
The house offers ample storage space throughout and also has off street parking.



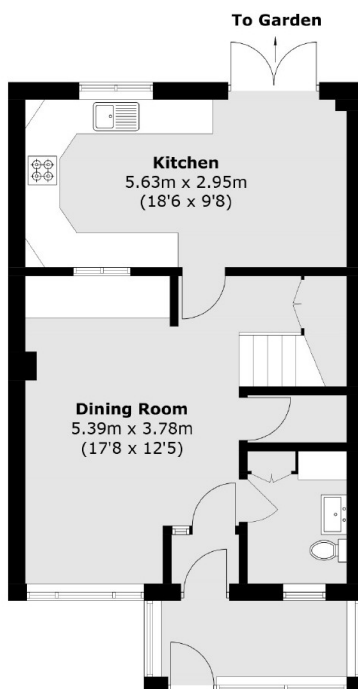
Rotherhithe Street, London, SE16



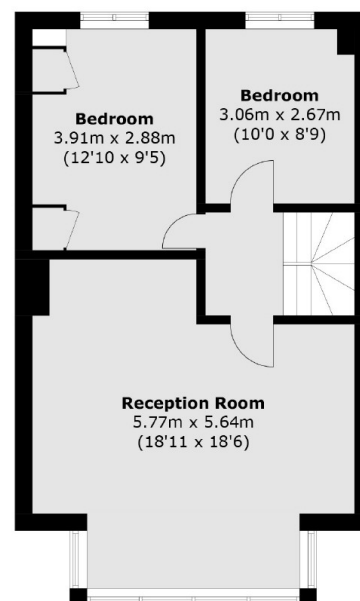
Second Floor



Third Floor



Ground Floor



First Floor

Total area (approx.): 181.4 sq. m (1,952.5 sq. ft)
(Excluding Eaves)
Balcony: 3.7 sq. m (39.8 sq. ft)