



Grange Yard, SE1

£595,000

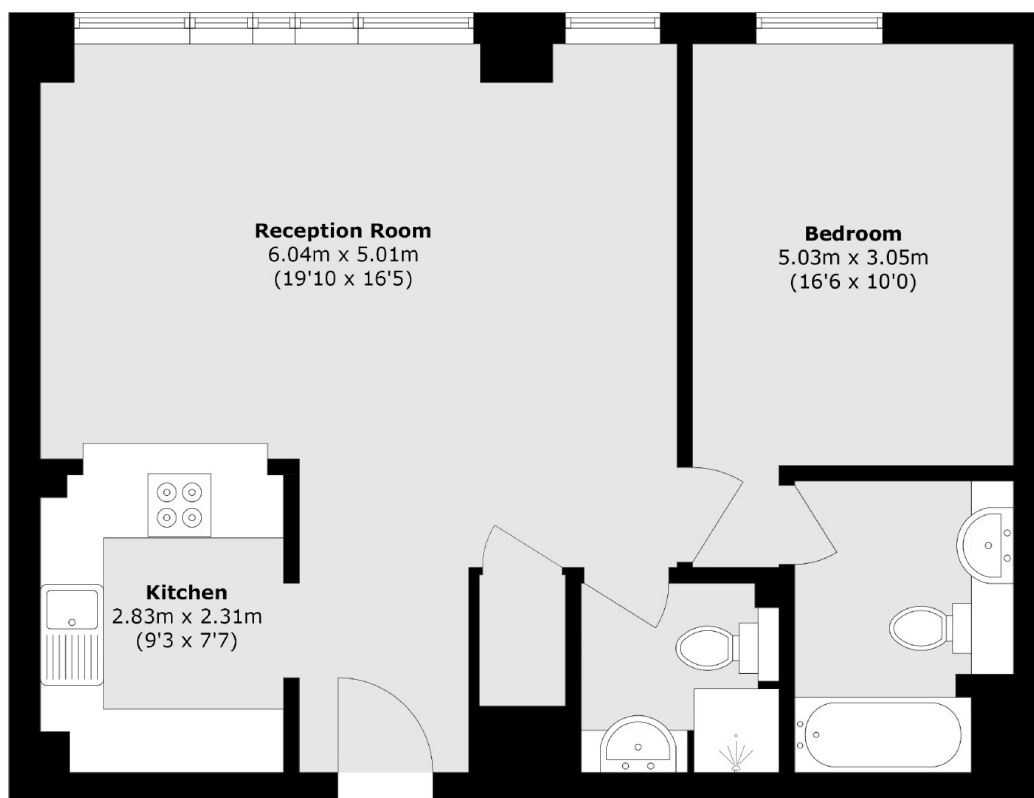
Located in the heart of Bermondsey, this 850sqft bright and airy one double bedroom flat is in stunning condition and boasts a large open plan kitchen and living space, two bathrooms, secure entry and huge windows.

Skyline Court is only 0.4 miles from Bermondsey station and 0.5 Miles from London Bridge station. Maltby Street Market, Bermondsey Street and a wide range of trendy food markets and artisan delis are moments away.

Features

- One Double Bedroom
- Two Bathrooms
- Light and Airy
- Ample Storage
- Chain Free
- Quiet Development

Grange Yard, London, SE1



Total area (approx.): 64.1 sq. m (689.9 sq. ft)