



Rotherhithe Street, SE16

£550,000

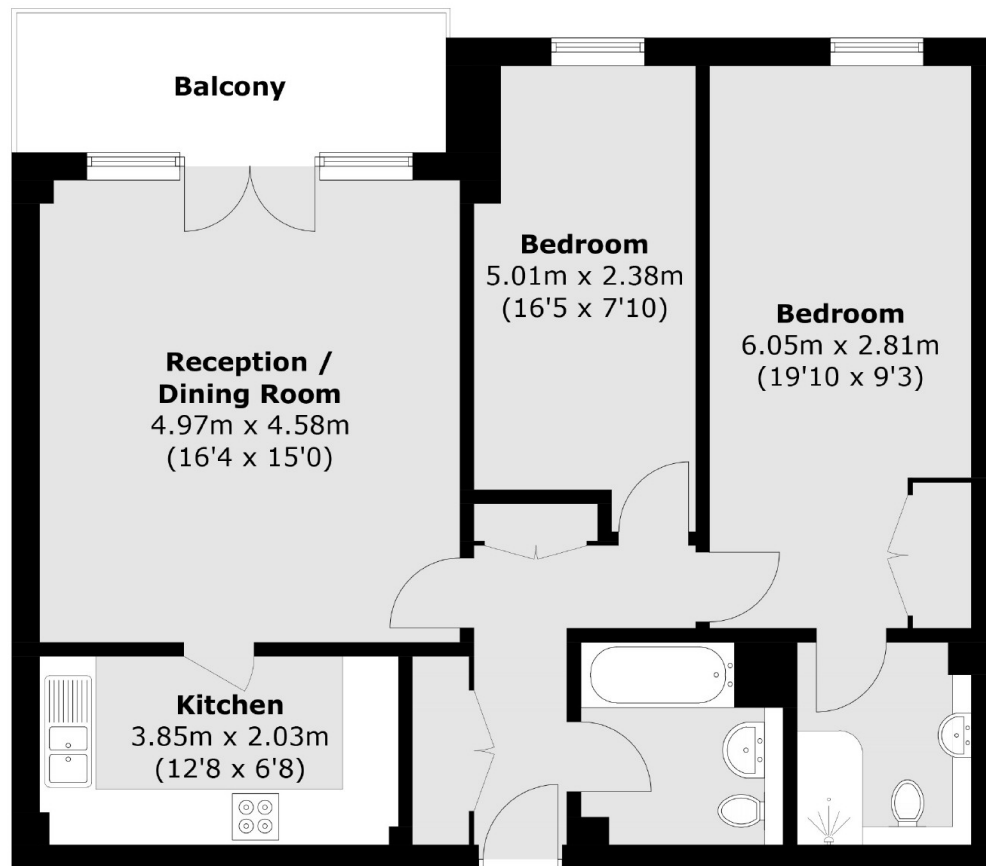
Offering beautiful views of the river, this two double bedroom flat is in fantastic condition and boasts a large living space with semi open plan kitchen, two bathrooms, private balcony, communal garden and an allocated parking space.

Somerville Point is located only 0.7 miles from Rotherhithe station and 0.7 miles from Canada Water station. An abundance of riverside pubs, shops and restaurants are all close by.

Features

- Two Double Bedrooms
- Two Bathrooms
- Private Balcony
- River Views
- Secure Allocated Parking
- Valid EWS1 Form

Rotherhithe Street,
London, SE16



Total area (approx.): 78.4 sq. m (843.8 sq. ft)
Balcony area: 6.9 sq. m (74.2 sq. ft)

Dexters

Canada Water
Montreal House
Surrey Quays Road
London
Sales
020 7650 5144

Energy Rating: B. We aim to make our particulars both accurate and reliable. However they are not guaranteed; nor do they form part of an offer or contract. If you require clarification on any points then please contact us, especially if you're traveling some distance to view. Please note that appliances and heating systems have not been tested and therefore no warranties can be given as to their good working order.

 **RICS** | Regulated
Estate Agent
and Letting Agent

[dexters.co.uk](https://www.dexters.co.uk)