



Rotherhithe Street, SE16

£700,000

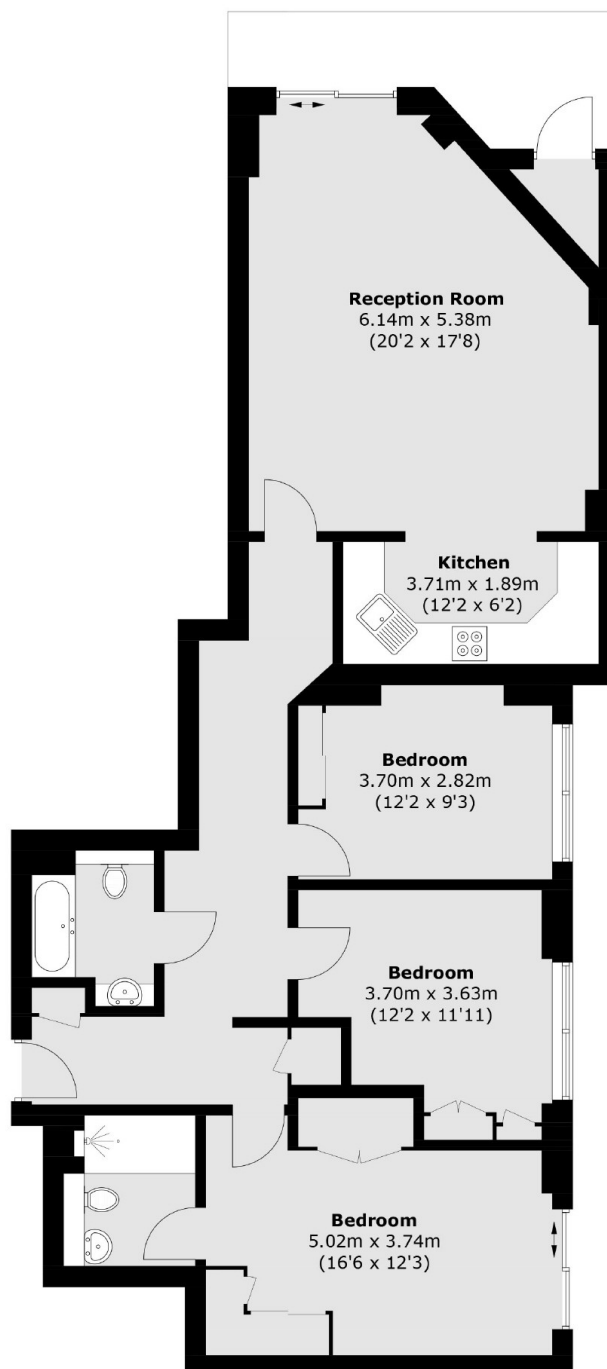
Situated within this sought after riverside development, this three double bedroom flat is in stunning condition and boasts a large open plan kitchen living space, two modern bathrooms and a large private terrace overlooking the river.

Located directly along the river, Pacific Wharf is 0.5 miles from Rotherhithe station and 0.6 miles from Canada Water station. An abundance of shops, cafés, restaurants and pubs are also close by.

Features

- Three Double Bedrooms
- Two Bathrooms
- Fantastic Condition
- Gated Development
- Concierge Facilities
- Chain Free

Rotherhithe Street, London, SE16



Internal Area (approx.): 103.1 sq. m (1109.8 sq. ft)
External Cupboard : 1.1 sq. m (11.8 sq. ft)

Dexters

Canada Water
Montreal House
Surrey Quays Road
London
Sales
020 7650 5144

Energy Rating: TBC. We aim to make our particulars both accurate and reliable. However they are not guaranteed; nor do they form part of an offer or contract. If you require clarification on any points then please contact us, especially if you're traveling some distance to view. Please note that appliances and heating systems have not been tested and therefore no warranties can be given as to their good working order.

 **RICS** | Regulated
Estate Agent
and Letting Agent

[dexters.co.uk](https://www.dexters.co.uk)