



## Mill Street, SE1

### £899,995

Boasting incredible views, this three double bedroom flat offers ample living space, separate kitchen, two bathrooms, additional guest WC, private balcony, communal roof terrace, concierge facilities and secure off street parking.

Vogans Mill Wharf is enviably located between Mill Street and St Saviour's Docks in Shad Thames, with easy access to London Bridge, and Bermondsey stations, Bank Side and Borough Market.

### Features

- Three Bedrooms
- Two Bathrooms
- 24 hour Concierge
- Secure Off-Street Parking
- Fantastic Location
- Incredible Views



## Mill Street, SE1

Arranged over just under 1,300sqft, the property offers ample light throughout and the views across the skyline are spectacular.

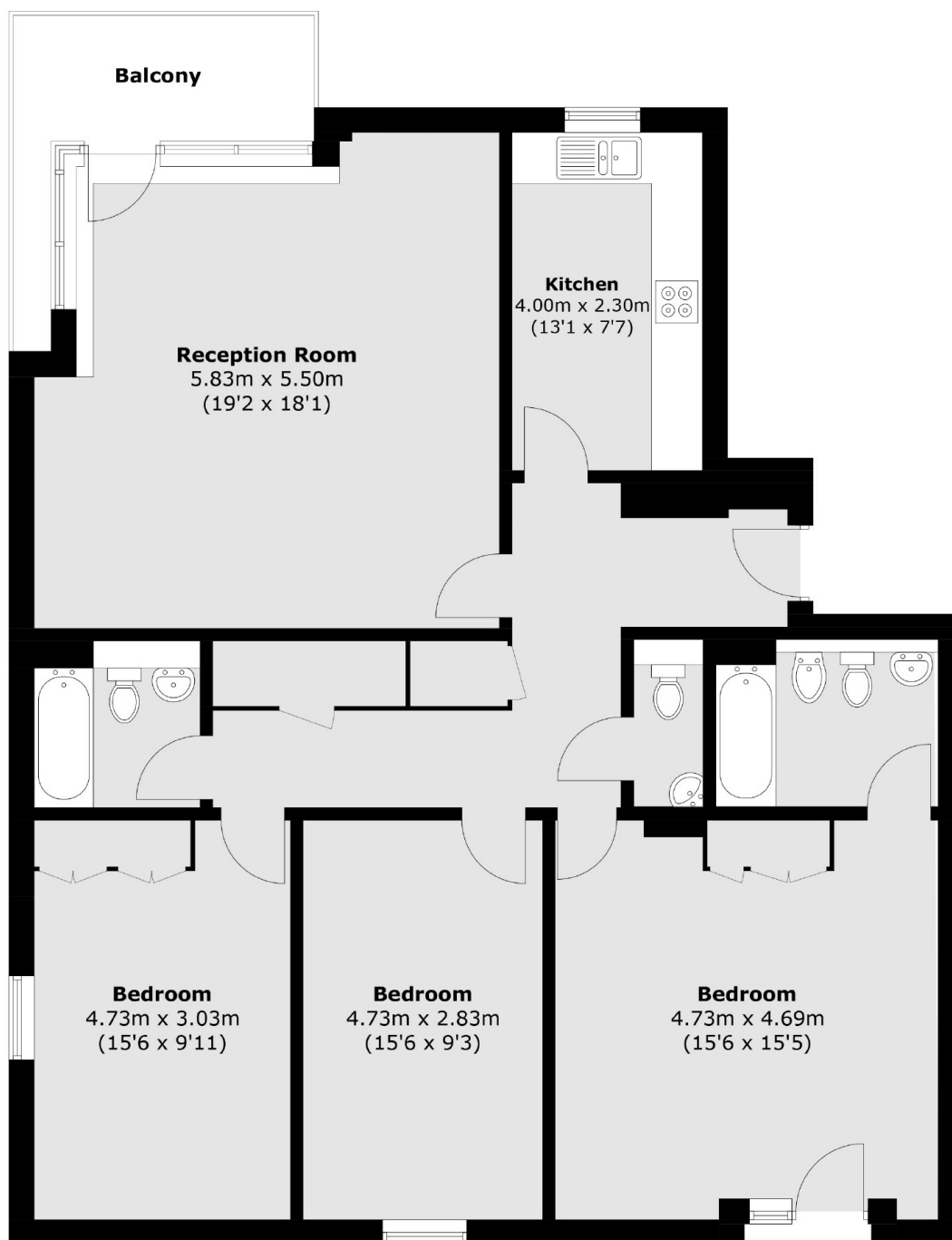
All three bedrooms are large double rooms and the master bedroom benefits from an en-suite bathroom. There is also an additional bathroom, guest WC and further storage in the hallway.

Vogans Mill Wharf boasts a 24 hour concierge, communal courtyard and a lovely fifth floor communal roof terrace, with skyline views. This property also benefits from secure, off-street parking.





# Mill Street, London, SE1



Total area (approx.): 119.6 sq. m (1287.4 sq. ft)  
Balcony: 6.5 sq. m (70.0 sq. ft)

## Dexters

Canada Water  
Montreal House  
Surrey Quays Road  
London  
Sales  
020 7650 5144

Energy Rating: . We aim to make our particulars both accurate and reliable. However they are not guaranteed; nor do they form part of an offer or contract. If you require clarification on any points then please contact us, especially if you're traveling some distance to view. Please note that appliances and heating systems have not been tested and therefore no warranties can be given as to their good working order.

 **RICS** | Regulated  
Estate Agent  
and Letting Agent

[dexters.co.uk](https://www.dexters.co.uk)