



Rotherhithe Street, SE16

£850,000

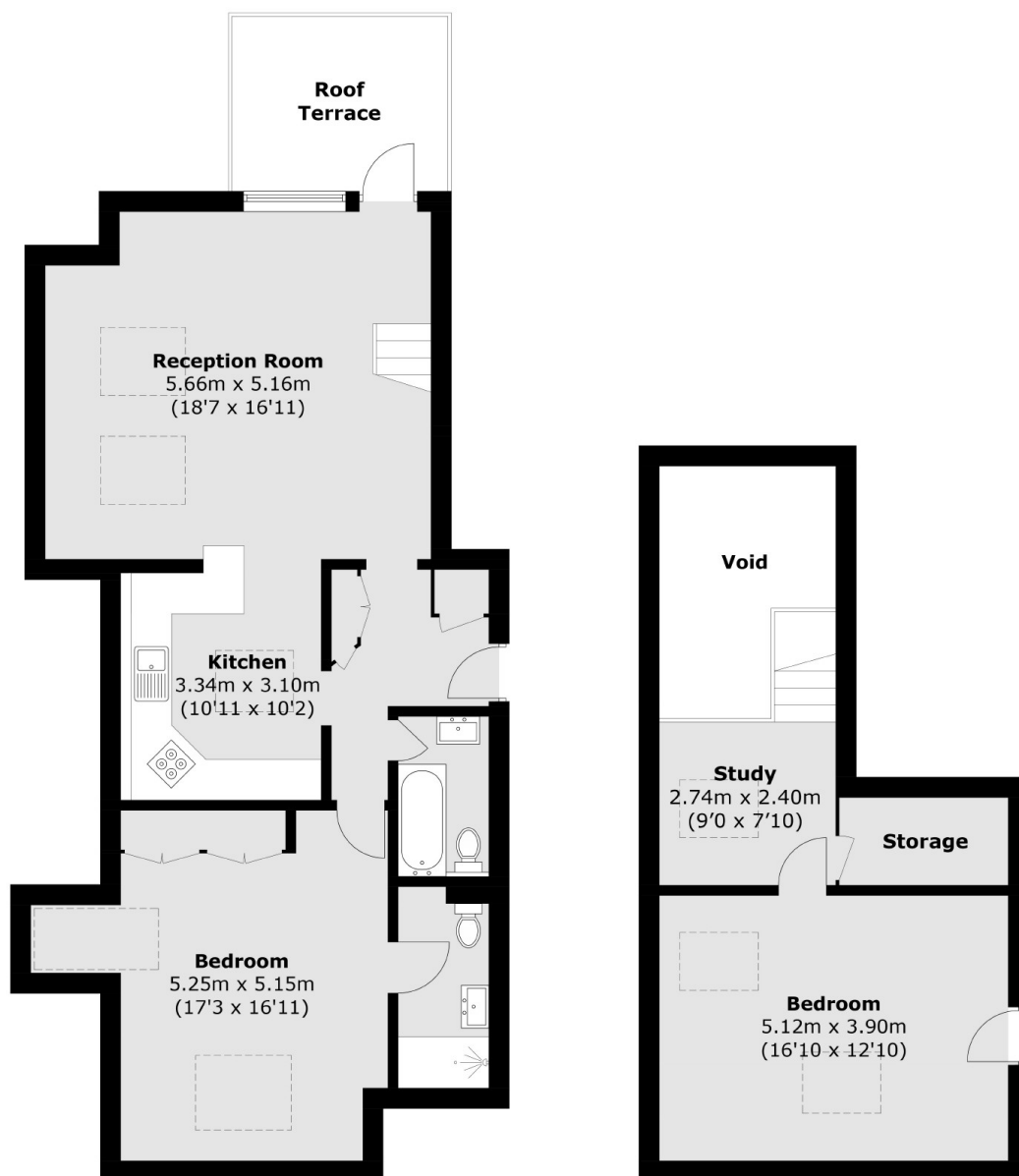
Arranged over 1,100sqft and offering stunning views from the private roof terrace, this split level two double bedroom flat is in stunning condition and boasts a modern kitchen, two bathroom, concierge facilities and parking.

Canada Wharf is an extremely sought after Warehouse Conversion located within a mile from Canada Water and Rotherhithe Station offering excellent transport links to Canary Wharf and The City.

Features

- Two Double Bedrooms
- Two Bathrooms
- Private Roof Terrace
- Stunning Views
- Share Of The Freehold
- Chain Free
- Warehouse Conversion

Rotherhithe Street, London, SE16



Sixth Floor

Seventh Floor

Total area (approx.): 107.1 sq. m (1,152.8 sq. ft)
(Excluding Void)
Roof Terrace: 8.1 sq. m (87.2 sq. ft)

Dexters

Canada Water
Montreal House
Surrey Quays Road
London
Sales
020 7650 5144

Energy Rating: C. We aim to make our particulars both accurate and reliable. However they are not guaranteed; nor do they form part of an offer or contract. If you require clarification on any points then please contact us, especially if you're traveling some distance to view. Please note that appliances and heating systems have not been tested and therefore no warranties can be given as to their good working order.

RICS Regulated
Estate Agent
and Letting Agent

dexters.co.uk