



Odessa Street, SE16

£550,000

Situated within this sought after development, this two double bedroom flat is immaculately presented and boasts a large living space, separate kitchen, two bathrooms, two balconies allocated parking, gym and swimming pool facilities and concierge.

Located less than a mile from Canada Water station and Surrey Quays station, New Caledonian Wharf offers great links to Canary Wharf and The City. The development is also surrounded by riverside restaurants and pubs.

Features

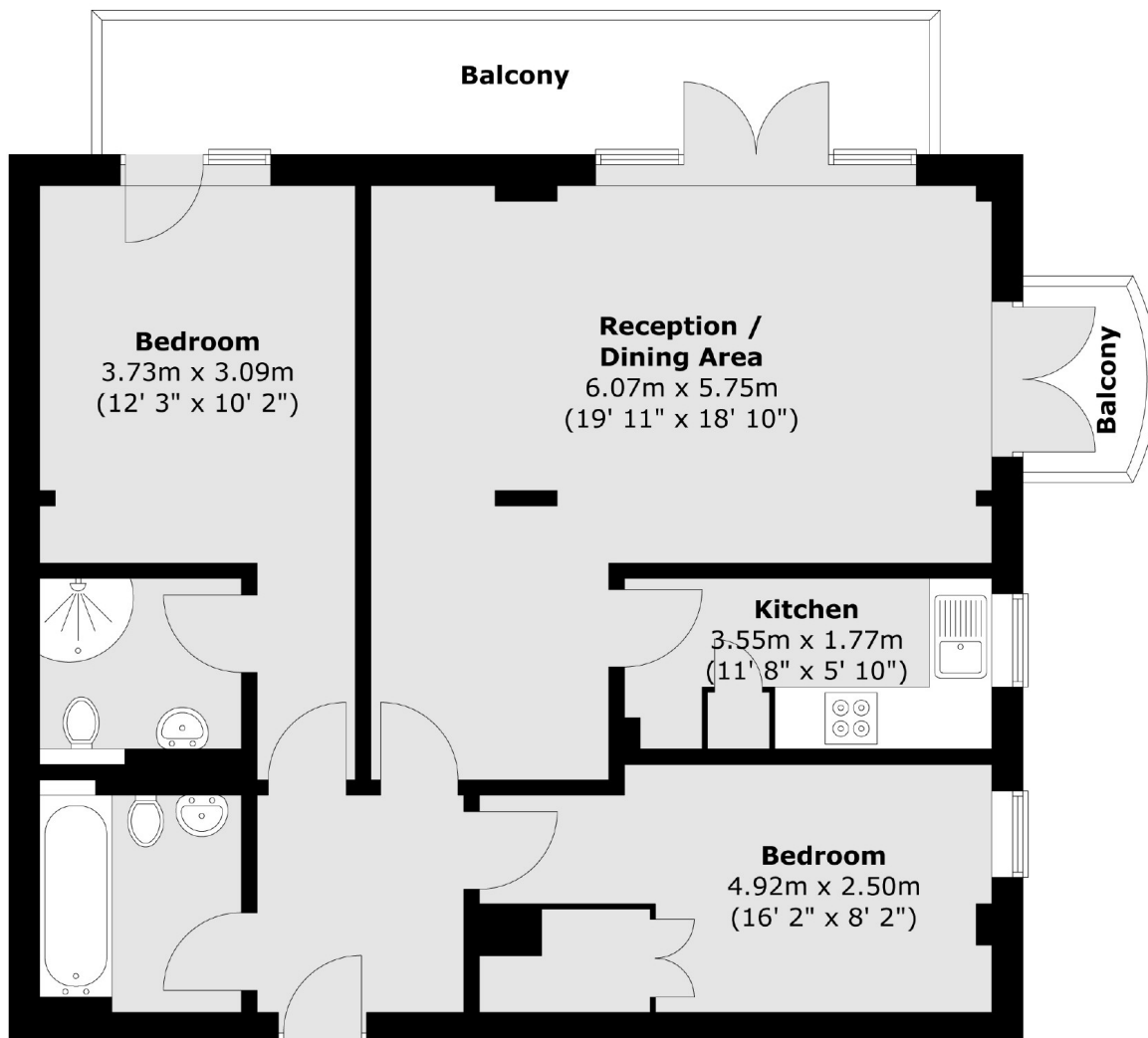
- Two Double Bedrooms
- Two Bathrooms
- Incredible River Views
- Two Balconies
- Allocated Parking
- Gated Development
- OIEO £600,000



Odessa Street, SE16



Odessa Street, London, SE16



Fourth Floor

Total area (approx.) : 75 sq. m (807 sq. ft)
Total balcony area (approx.) : 12.4 sq. m (133 sq. ft)