



## Silwood Street, SE16

### £475,000

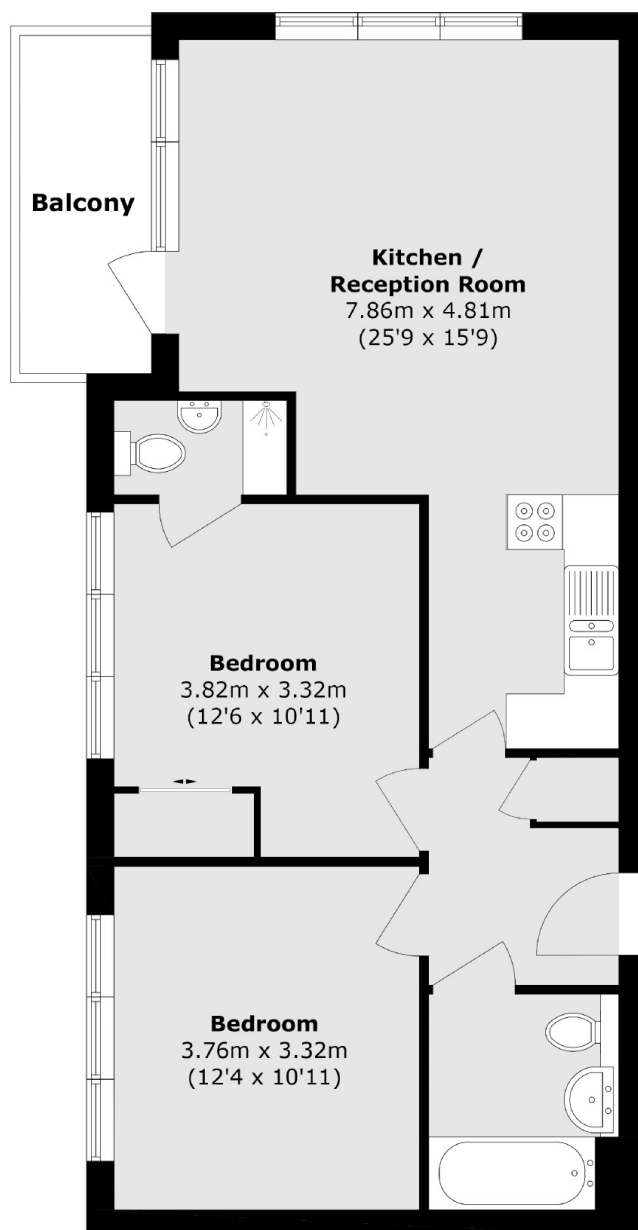
Situated on a quiet leafy street, this bright and airy two double bedroom flat is in excellent condition and boasts a large open plan kitchen living room, two bathrooms, ample storage and a private balcony.

Chamberlain Court is located only 0.4 miles from Surrey Quays station and 0.7 miles from Canada Water station offering excellent transport links to all of London. An abundance of shops cafés and restaurants are also close by.

### Features

- Two Double Bedrooms
- Two Bathrooms
- Excellent Condition
- Fantastic Location
- Private Balcony
- Ample Storage
- Offers in excess of £475,000

# Silwood Street, London, SE16



Total area (approx.): 67.9 sq. m (730.8 sq. ft)

Balcony area (approx.): 5.3 sq. m (57.0 sq. ft)

## Dexters

Canada Water  
Montreal House  
Surrey Quays Road  
London

Sales  
020 7650 5144

Energy Rating: . We aim to make our particulars both accurate and reliable. However they are not guaranteed; nor do they form part of an offer or contract. If you require clarification on any points then please contact us, especially if you're traveling some distance to view. Please note that appliances and heating systems have not been tested and therefore no warranties can be given as to their good working order.

 **RICS** | Regulated  
Estate Agent  
and Letting Agent

[dexters.co.uk](https://dexters.co.uk)