



George Beard Road, SE8

£825,000

Offering breathtaking views of London, this penthouse apartment is in stunning condition and has three large double bedrooms, two bathrooms and an open plan kitchen living space, secure parking and stunning private terrace.

Located within a mile of Canada Water station and Surrey Quays station, Aragon Tower offers an easy commute to Canary Wharf and The City. Thames Clipper river boat is a close walk across the river providing services to Central London and Greenwich.

Features

- Three Double Bedrooms
- Penthouse Apartment
- Parking
- Private Terrace
- Excellent Condition
- Panoramic Views



George Beard Road, SE8

Arranged over almost 1,400sqft, the flat has oak flooring throughout, well maintained kitchen and bathrooms and ample storage space. The flat has floor to ceiling windows, offering lots of natural light and an outstanding panoramic view of London from every window.

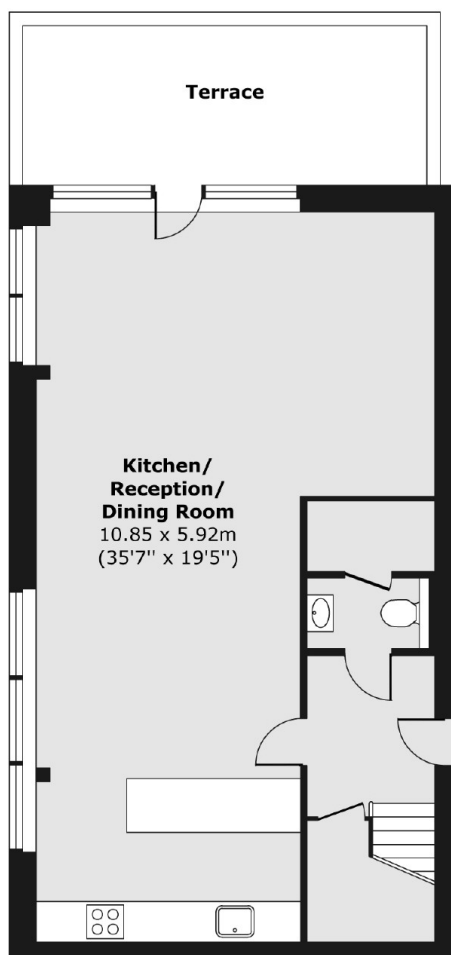
Aragon Tower is a secure riverside development and offers 24 hour concierge and the flat has two allocated parking spaces. The flat also offers access to the large roof terrace.

The development is close to the shops and amenities of Canada Water, Canary Wharf and Greenwich. Southwark Park and Deptford Park are also close by.

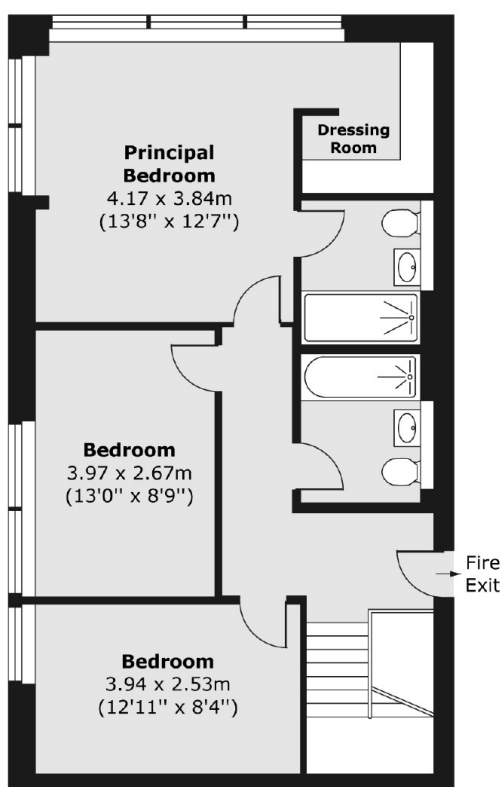


George Beard Road, London, SE8

Twenty-Fifth Floor



Twenty-Six Floor



Total area (approx.) 129.35 sq. m (1,392 sq. ft)
Terrace area (approx.) 14.22 sq. m (153 sq. ft)