



## Odessa Street, SE16

£461 Per week

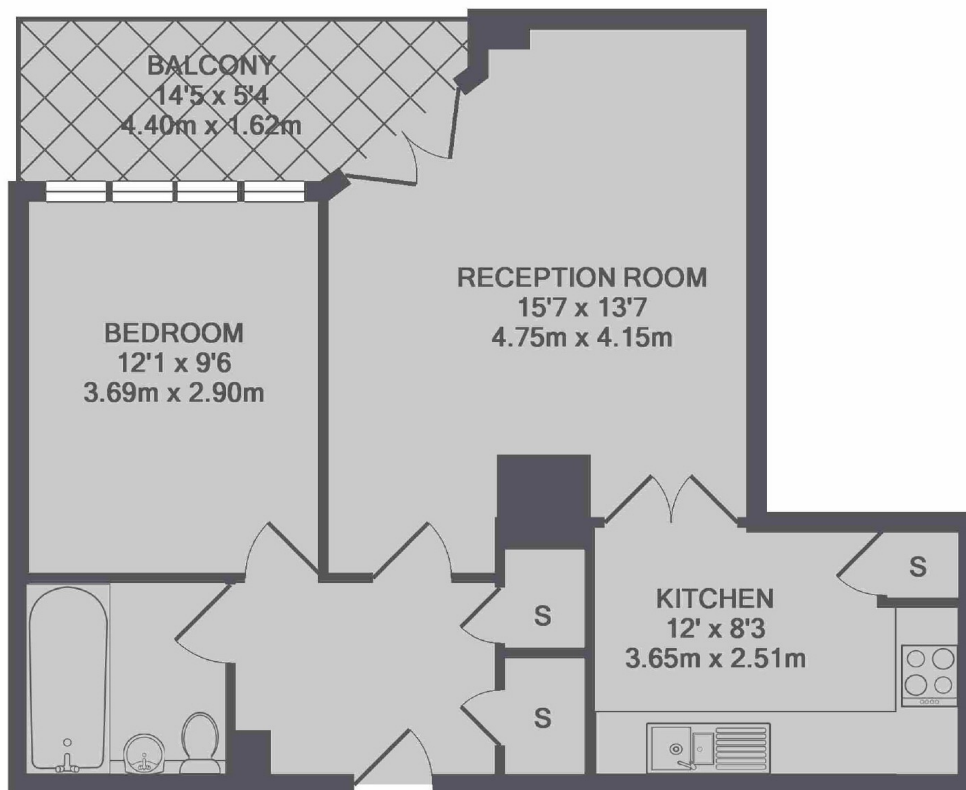
A spacious one double bedroom apartment overlooking The Thames. With a modern kitchen, and wood flooring, this property would suit a single occupant or professional couple.

New Caledonian Wharf is a sought after new build development over looking the river below. There are easy bus links to Canada Water Station which is on the Jubilee Line. Surrey Quays shopping is also just a short walk from the property.

### Features

- One Double Bedroom
- Separate Kitchen
- Balcony
- River views
- Porter
- On Site Swimming Pool

# Odessa Street, London, SE16



TOTAL APPROX. FLOOR AREA 544 SQ.FT. (50.5 SQ.M.)

## Dexters

Canada Water  
Montreal House  
Surrey Quays Road  
London  
Lettings  
020 7650 5145

Energy Rating: B. We aim to make our particulars both accurate and reliable. However they are not guaranteed; nor do they form part of an offer or contract. If you require clarification on any points then please contact us, especially if you're traveling some distance to view. Please note that appliances and heating systems have not been tested and therefore no warranties can be given as to their good working order.

 **RICS** | Regulated  
Estate Agent  
and Letting Agent

[dexters.co.uk](https://www.dexters.co.uk)