



Bermondsey Wall East, SE16

£695,000

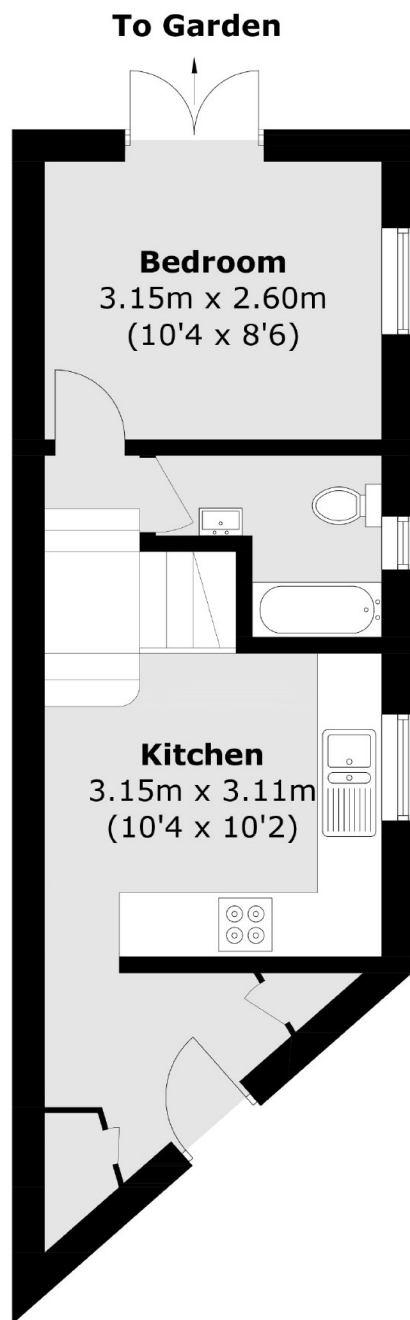
Offering incredible views of the river, this detached Grade II listed one double bedroom period freehold house is in excellent condition and boasts a private courtyard, parking, ample storage and has potential to develop.

Bermondsey Wall East is on the River Thames, only 0.2 miles from Bermondsey Station and 0.4 miles from Rotherhithe station offering excellent transport links to anywhere in London.

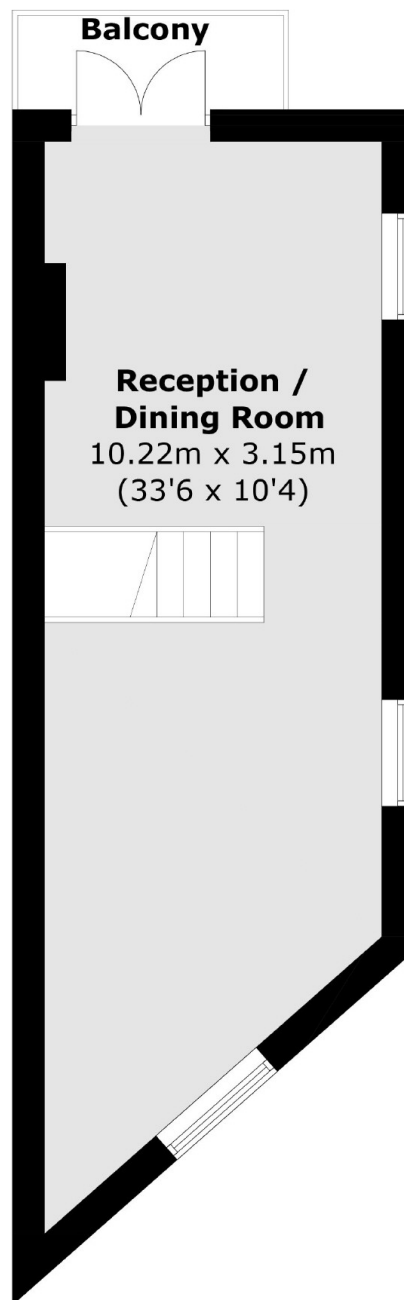
Features

- One Bedroom
- Freehold Grade II Listed House
- Detached
- Riverside Location
- Private Courtyard
- Fantastic Condition

Bermondsey Wall East, London, SE16



Ground Floor



First Floor

Total area (approx.): 56.2 sq. m (604.9 sq. ft)