



Bywater Place, SE16

£496 Per week

A two double bedroom split-level apartment covering 858sqft. Located near to woodland and Redriff Primary School, it has a separate kitchen, south-west facing reception with wall-to-wall glazing, allocated parking and built-in storage.

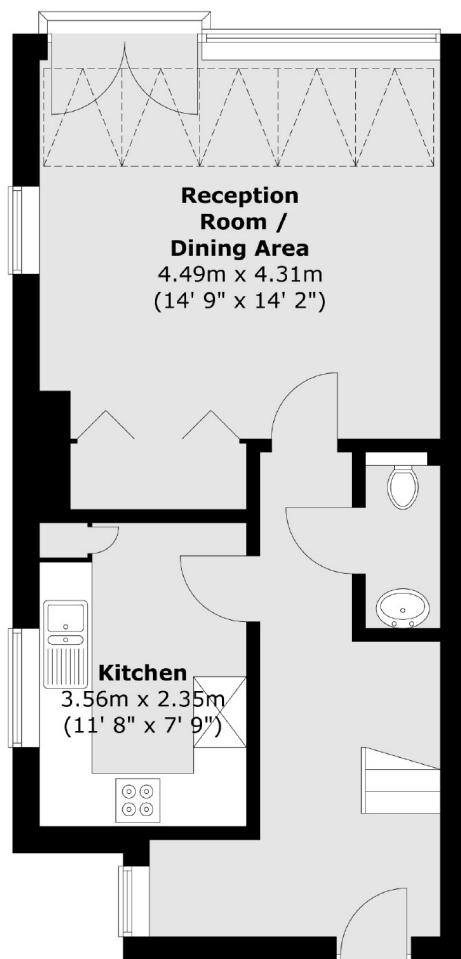
Bywater Place is a quiet residential street close to the river. Rotherhithe Overground and Canada Water Underground Station are both within easy reach of the property as is Surrey Quays Shopping Centre.

Features

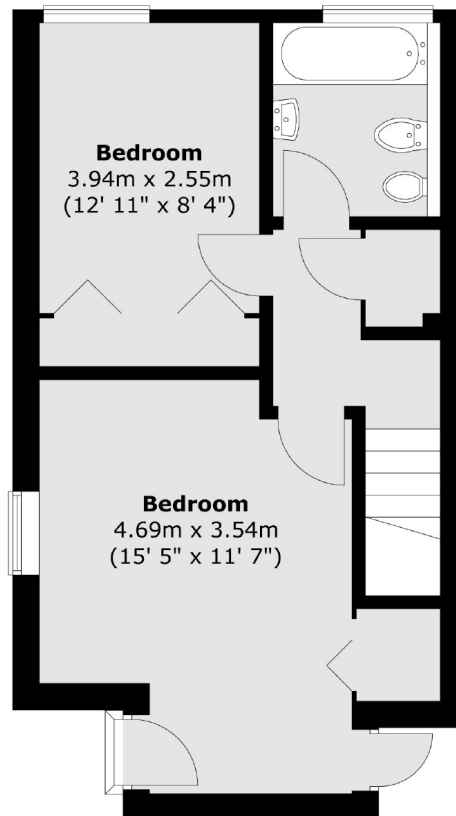
- Two Double Bedroom
- Split Level
- Separate Kitchen
- Allocated Parking
- Rotherhithe
- Built-in Storage

Bywater Place, London, SE16

First Floor



Second Floor



Total area (approx.) : 81.7 sq. m (879 sq. ft)