



Elizabeth Square, SE16

£484 Per week

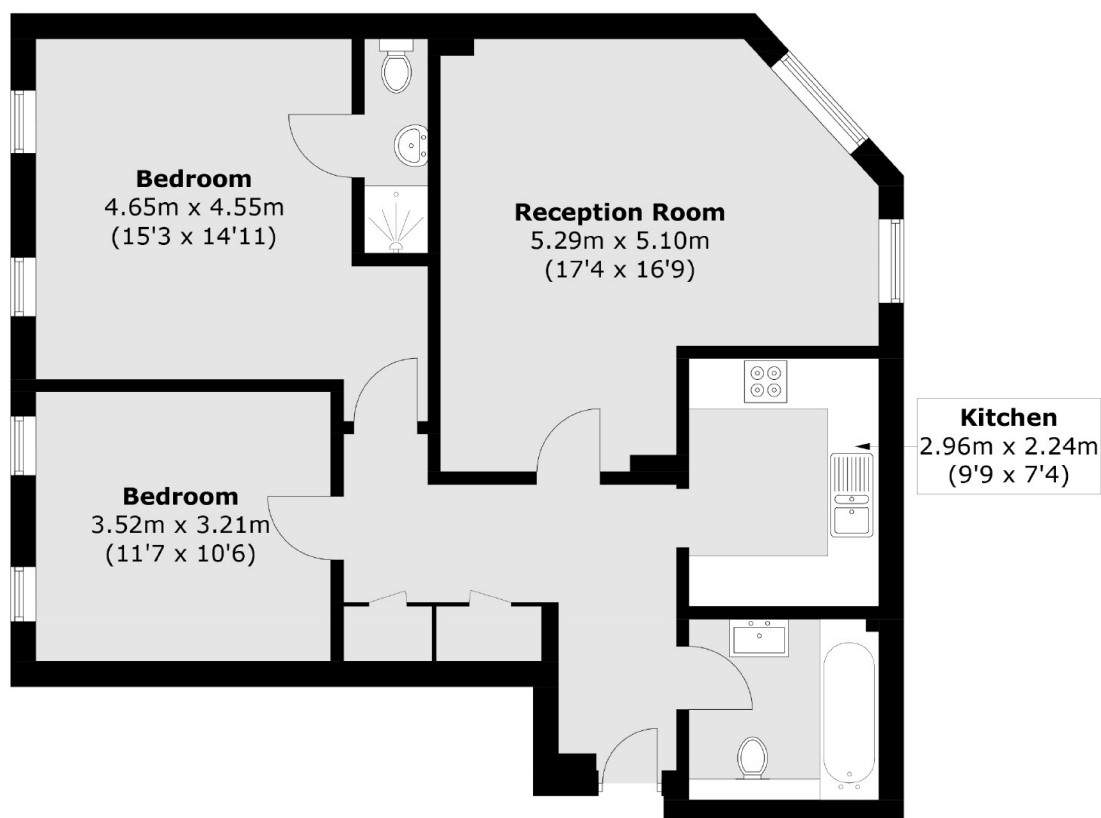
This smart, top floor, two double bedroom, two bathroom apartment would make a great property for a professional couple or sharers, looking for the quiet life in Rotherhithe.

Elizabeth Square is located on the riverside, across the water from Canary Wharf and with views back towards the city. Nearby is the Stave Hill Ecological Park as well as easy access to Canada Water, Rotherhithe and Surrey Quays, with their various amenities. The ferry from Hilton Double Tree will take just 3 minutes, and the service runs every 10 minutes each way.

Features

- Two Double Bedrooms
- Furnished
- Ferry to Canary Wharf
- Two Bathrooms
- Dishwasher
- Rotherhithe

Elizabeth Square, London, SE16



Total area (approx.): 78.3 sq. m (842.8 sq. ft)