



Rotherhithe Street, SE16

£2,600 Per week

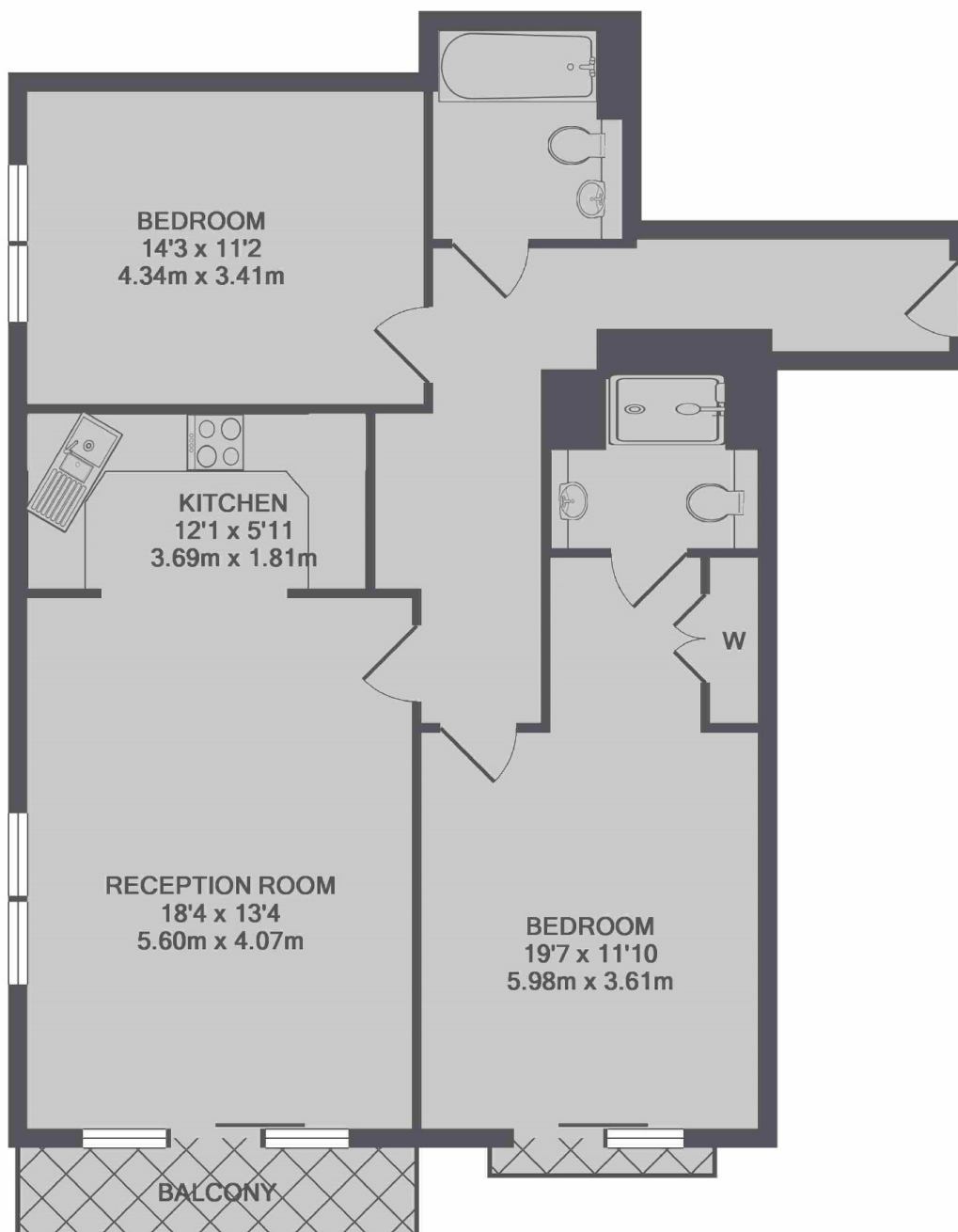
A spacious two double bedroom property in Rotherhithe. The property faces onto the river with stunning views, enjoyed from a large private balcony. There is a 24 hour concierge, and the development is completely gated.

Pacific Wharf is a private development overlooking The River Thames. Surrey Quays Shopping Centre has numerous retail outlets, and there are good bus and underground links close by.

Features

- Two Double Bedrooms
- Two Bathrooms
- Furnished
- Parking
- Balcony
- Concierge

Rotherhithe Street,
London, SE16



TOTAL APPROX. FLOOR AREA 943 SQ.FT. (87.6 SQ.M.)

Dexters

Tower Bridge
50 Shad Thames
London
SE1 2LY
Lettings
0207 650 5105

Energy Rating: C. We aim to make our particulars both accurate and reliable. However they are not guaranteed; nor do they form part of an offer or contract. If you require clarification on any points then please contact us, especially if you're traveling some distance to view. Please note that appliances and heating systems have not been tested and therefore no warranties can be given as to their good working order.

 **RICS** | Regulated
Estate Agent
and Letting Agent

[dexters.co.uk](https://www.dexters.co.uk)