



## Strathnairn Street, SE1

### £425,000

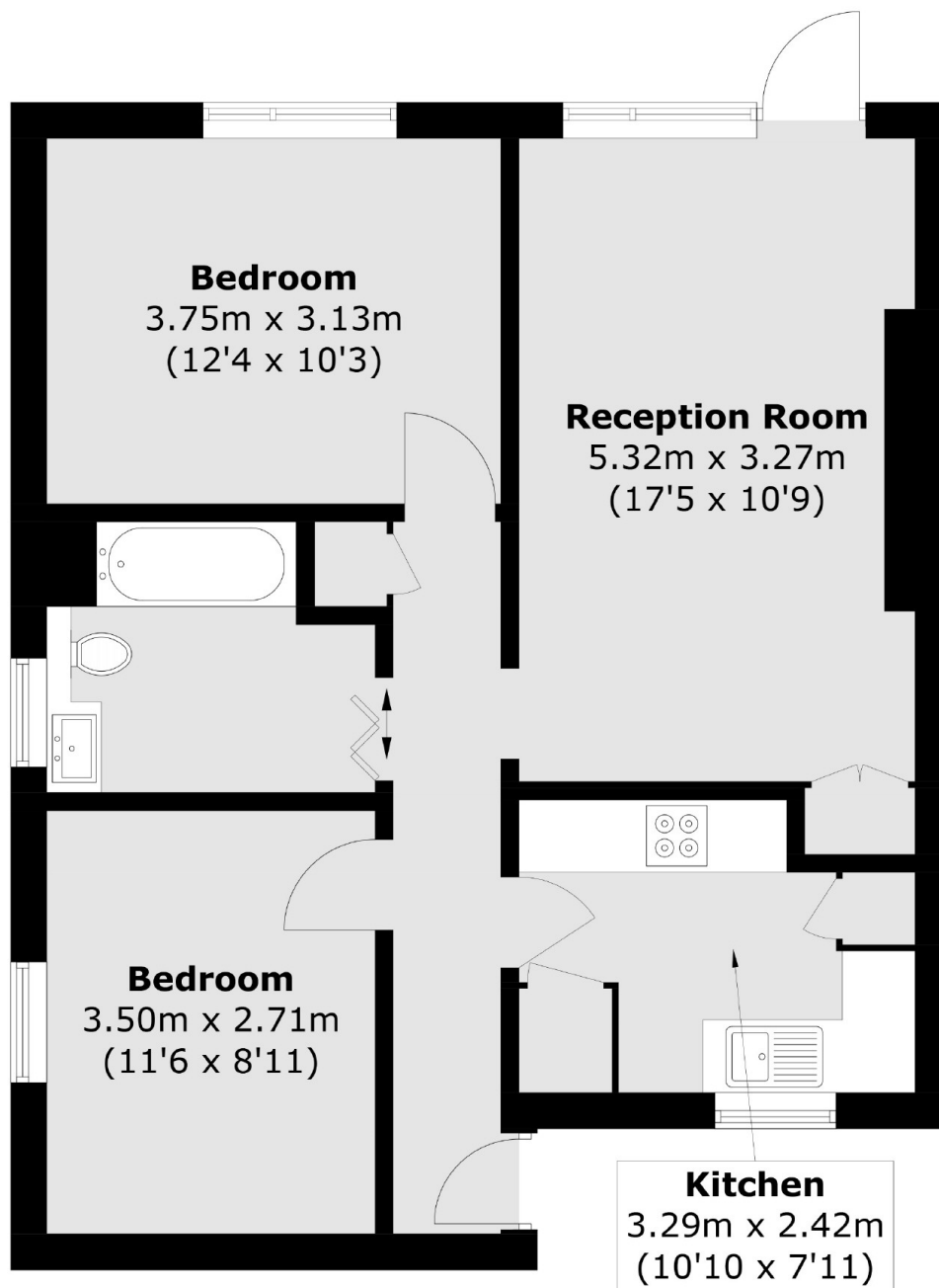
Offering a stunning private garden, this two double bedroom flat is immaculately presented and boasts a separate kitchen, bathroom, ample storage and is being sold chain free.

Townsend House is located moments from a wide range of restaurants, shops and food markets. Bermondsey station is only 0.5 miles away and South Bermondsey is just 0.4 miles away offering fantastic transport links to anywhere in London.

### Features

- Two Double Bedrooms
- Private Garden
- Parking Available
- Chain Free
- Fantastic Location
- Ground Floor

# Strathnairn Street, London, SE1



Total area (approx.): 61.2 sq. m (658.7 sq. ft)