



Yeoman Street, SE8

£575,000

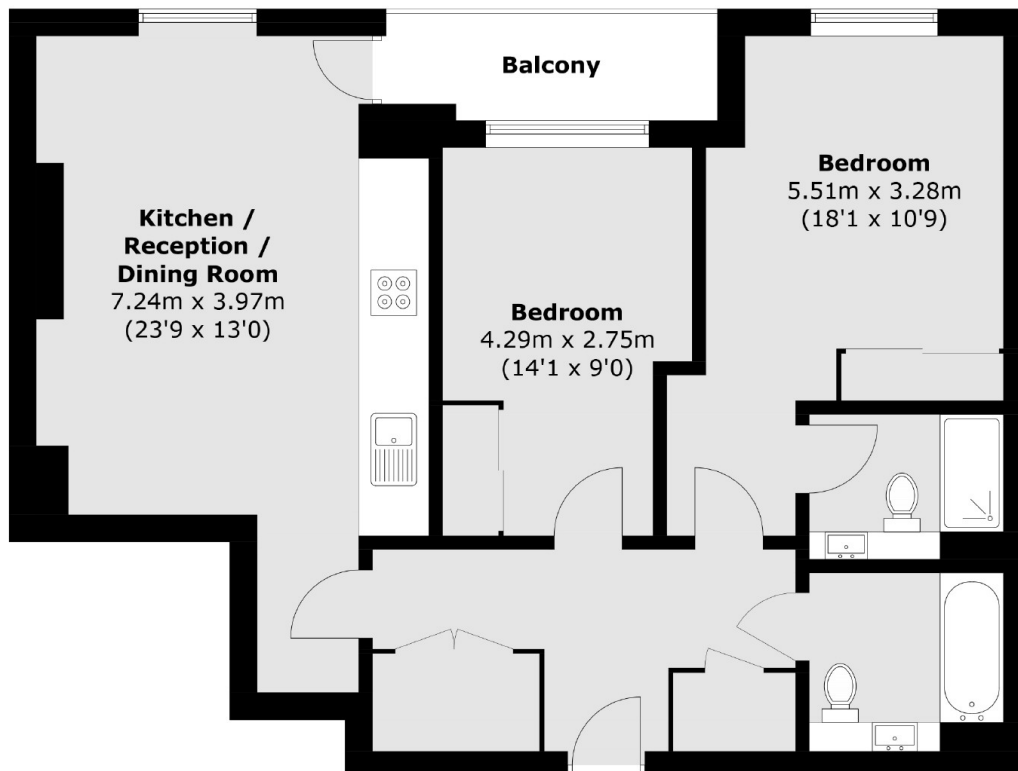
Situated within this extremely sought after development, this stunning two double bedroom flat boasts a large open plan kitchen and living space, two bathrooms, ample storage, private balcony and gym facilities.

Located just 0.4 miles from Surrey Quays station and 0.8 miles to Canada Water station, Mandara Place offers excellent transport links to anywhere in London. A wide range of shops, deli's and restaurants are close by.

Features

- Two Double Bedrooms
- Two Bathrooms
- Excellent Condition
- Gym Facilities
- Fantastic Location
- Chain Free
- Parking Available To Purchase

Yeoman Street, London, SE8



Total area (approx.): 72.1 sq. m (776.1 sq. ft)
Balcony : 4.2 sq. m (45.2 sq. ft)

Dexters

London Bridge
54 Borough High Street
London
SE1 1XL
Sales
020 7650 5 100

Energy Rating: C. We aim to make our particulars both accurate and reliable. However they are not guaranteed; nor do they form part of an offer or contract. If you require clarification on any points then please contact us, especially if you're traveling some distance to view. Please note that appliances and heating systems have not been tested and therefore no warranties can be given as to their good working order.

 **RICS** | Regulated
Estate Agent
and Letting Agent

[dexters.co.uk](https://www.dexters.co.uk)