



Rotherhithe Street, SE16

£650,000

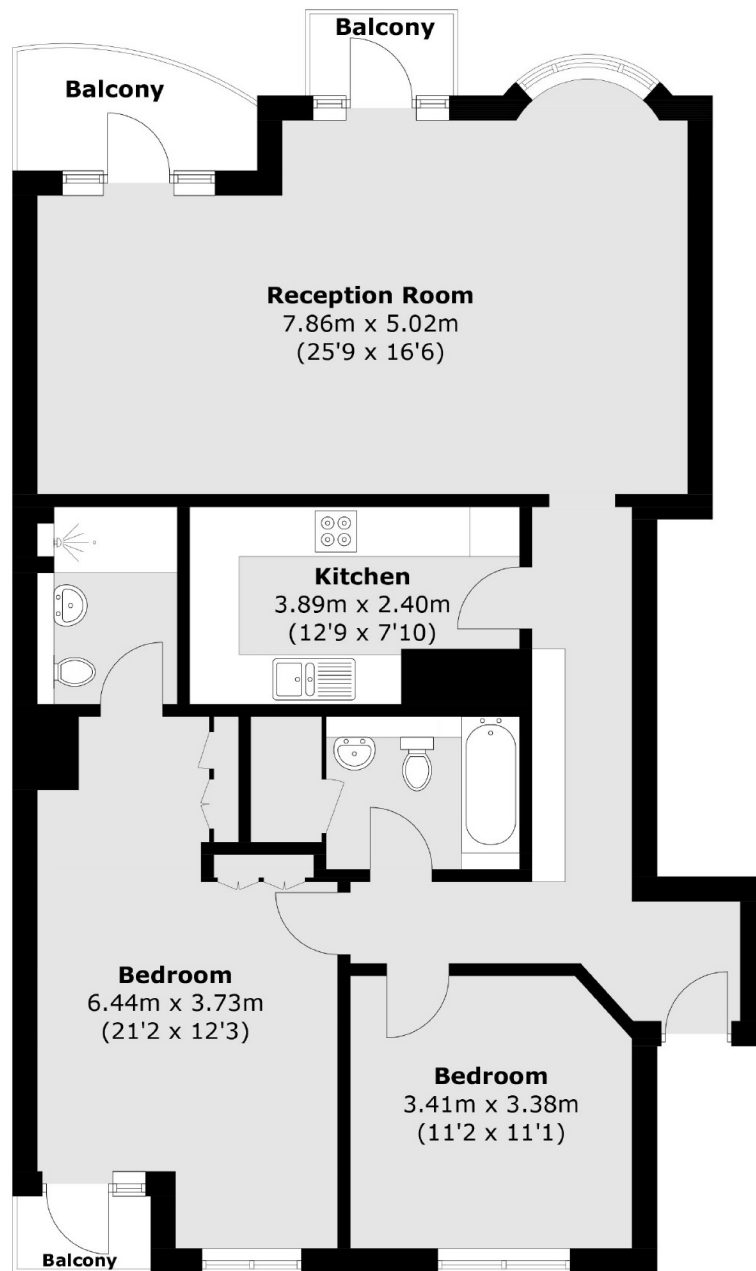
Offering stunning views of the river, this two double bedroom flat is immaculately presented and boasts a large living space, separate kitchen, modern bathrooms, two private balconies and parking. The development offers concierge and swimming pool facilities.

Located just 0.6 miles from Rotherhithe station and 0.8 miles from Canada Water. Windsor Court is surrounded by shops, cafés and riverside pubs and restaurants.

Features

- Two Double Bedrooms
- Two Bathrooms
- Two Private Balconies
- Excellent Condition
- Concierge & Swimming Pool
- Secure Underground Parking

Rotherhithe Street,
London, SE16



Total area (approx.): 100.0 sq. m (1,076 sq. ft)
Balcony : 6.9 sq. m (74.2 sq. ft)

Dexters

London Bridge
54 Borough High Street
London
SE1 1XL
Sales
020 7650 5 100

Energy Rating: C. We aim to make our particulars both accurate and reliable. However they are not guaranteed; nor do they form part of an offer or contract. If you require clarification on any points then please contact us, especially if you're traveling some distance to view. Please note that appliances and heating systems have not been tested and therefore no warranties can be given as to their good working order.

 **RICS** | Regulated
Estate Agent
and Letting Agent

[dexters.co.uk](https://www.dexters.co.uk)