



## Horselydown Lane, SE1

### £725,000

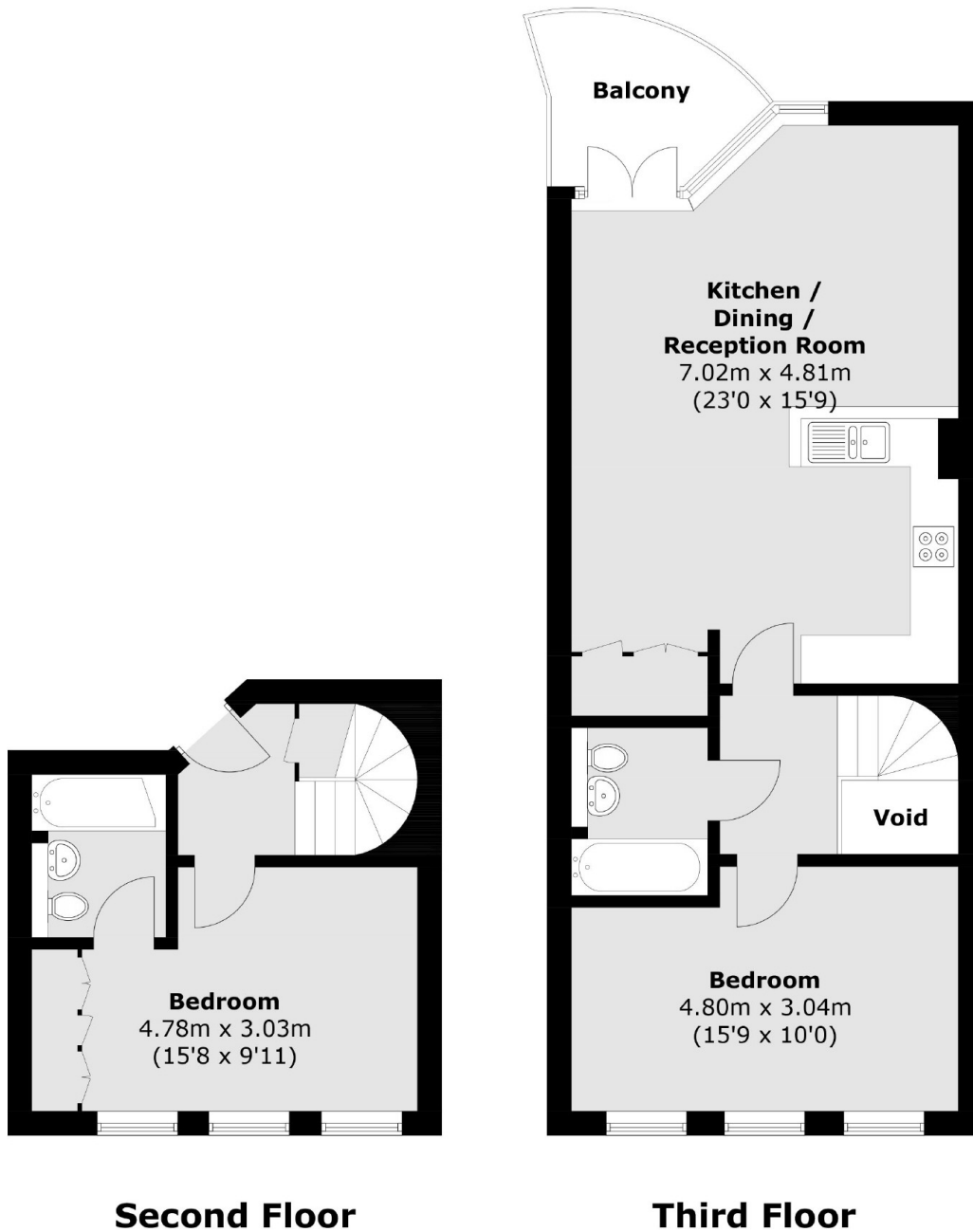
Located in this sought after development, this split level apartment is in fantastic condition and boasts two large double bedrooms, two bathrooms, open plan kitchen living space, private balcony and secure allocated parking.

The development is located in the heart of Shad Thames and is surrounded by a wide range of restaurants and shops. London Bridge station is just 0.3 miles away.

### Features

- Two Double Bedrooms
- Split Level Apartment
- Chain Free
- Private Balcony
- Allocated Parking Space
- Riverside Location
- Offers in excess of £725,000

# Horselydown Lane, London, SE1



Total area (approx.): 77.4 sq. m (833.1 sq. ft)  
Balcony: 4.7 sq. m (50.6 sq. ft)  
(Excluding Void)

## Dexters

London Bridge  
54 Borough High Street  
London  
SE1 1XL  
Sales  
020 7650 5 100

Energy Rating: . We aim to make our particulars both accurate and reliable. However they are not guaranteed; nor do they form part of an offer or contract. If you require clarification on any points then please contact us, especially if you're traveling some distance to view. Please note that appliances and heating systems have not been tested and therefore no warranties can be given as to their good working order.

 **RICS** | Regulated  
Estate Agent  
and Letting Agent

[dexters.co.uk](https://www.dexters.co.uk)