



Bailey Street, SE8

£570,000

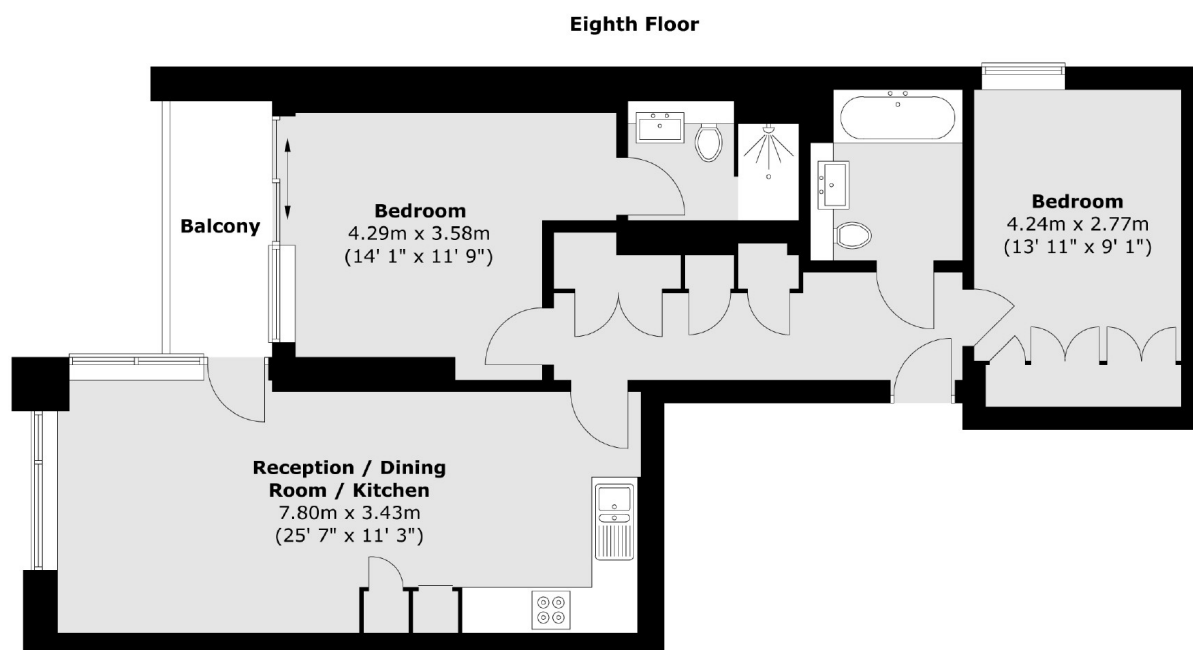
Offering incredible views of the London skyline, this two double bedroom flat is in fantastic condition and boasts a large open plan kitchen living space, two double bedrooms, two, large private balcony, gym and concierge facilities.

Malmo Tower is located in the heart of Surrey Quays. It includes a plethora of amenities like supermarkets, coffee shops, restaurants and hair dressers. Transport options include the underground and overground as well as numerous bus links.

Features

- Two Double Bedrooms
- Two Bathrooms
- Private Balcony
- Excellent Condition
- Gym Facilities & 24 Hr
- Concierge
- Stunning Views

Bailey Street, London, SE8



Total area (approx.) : 72.6 sq. m (781 sq. ft)
Total balcony area (approx.) : 4.8 sq. m (51 sq. ft)