



Jamaica Road, SE16

£650,000

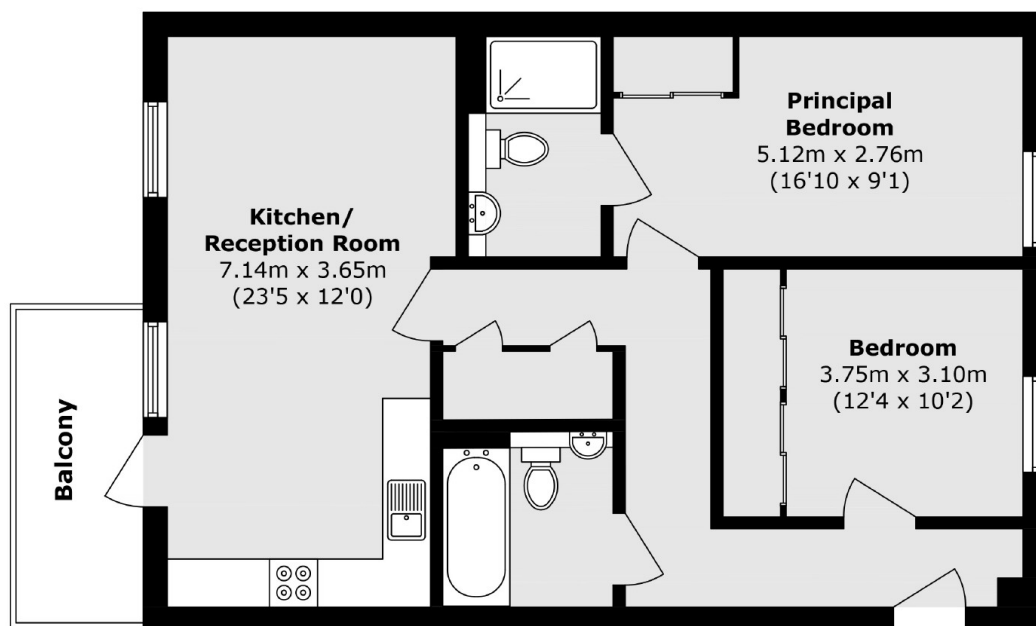
This fabulous two bedroom flat is in immaculate condition and boasts a superb open plan kitchen/ living space. The master bedroom offers fitted wardrobes and en suite. The flat has a South facing private balcony, secure underground parking space and access to communal gardens.

Parker Building is only 0.2 miles from Bermondsey station and 0.9 miles from London Bridge Station. Tower Bridge, Shad Thames, the Riverside, Borough Market, Bermondsey Street and Maltby Street Market are all also within easy reach.

Features

- Two Double Bedrooms
- Two Bathrooms
- Excellent Location
- Private South Facing Balcony
- Secure Underground Parking
- Offers Over £650,000

Jamaica Road, London, SE16



Total area (approx.): 76.5 sq. m (823 sq. ft)
Balcony area (approx.): 6.2 sq. m (66.7 sq. ft)

Dexters

London Bridge
54 Borough High Street
London
SE1 1XL
Sales
020 7650 5 100

Energy Rating: TBC. We aim to make our particulars both accurate and reliable. However they are not guaranteed; nor do they form part of an offer or contract. If you require clarification on any points then please contact us, especially if you're traveling some distance to view. Please note that appliances and heating systems have not been tested and therefore no warranties can be given as to their good working order.

 **RICS** | Regulated
Estate Agent
and Letting Agent

[dexters.co.uk](https://www.dexters.co.uk)