



## Marine Street, SE16

£600,000

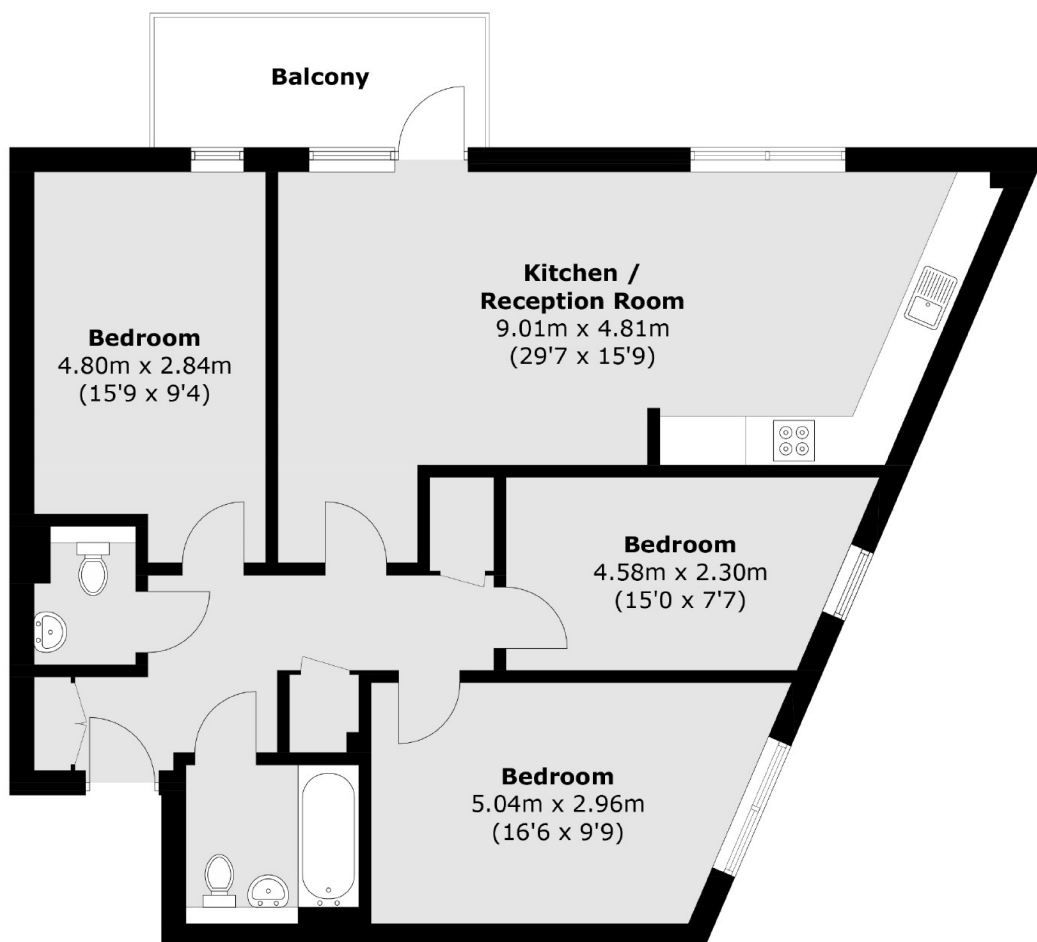
Situated in this sought after development, this three double bedroom flat is in excellent condition and has a large open plan kitchen living space, private balcony, permit parking, ample storage and lots of natural light.

Eyot House is only 0.2 miles from Bermondsey station. Shad Thames, London Bridge, Maltby Street Market and a wide range of shops, cafés and restaurants are all close by.

### Features

- Three Double Bedrooms
- Private Balcony
- Communal Bike Storage
- Long Lease
- Fantastic Location
- Offers Over £600,000

Marine Street,  
London, SE16



Total area (approx.): 89.0 sq. m (958.0 sq. ft)  
Balcony: 6.5 sq. m (70.0 sq. ft)

**Dexters**

London Bridge  
54 Borough High Street  
London  
SE1 1XL  
Sales  
020 7650 5 100

Energy Rating: B. We aim to make our particulars both accurate and reliable. However they are not guaranteed; nor do they form part of an offer or contract. If you require clarification on any points then please contact us, especially if you're traveling some distance to view. Please note that appliances and heating systems have not been tested and therefore no warranties can be given as to their good working order.

 **RICS** | Regulated  
Estate Agent  
and Letting Agent

[dexters.co.uk](https://www.dexters.co.uk)