



## Shad Thames, SE1

### £1,150,000

Located in the heart of Shad Thames, this two double bedroom flat is in fantastic condition and retains all of its original features. It boasts a spectacular living space, two bathrooms and allocated parking space.

Wheat Wharf Apartments is situated on Shad Thames and is surrounded by restaurants, shops and delis. London Bridge station is 0.4 miles away.

### Features

- Two Double Bedroom
- Two Bathrooms
- Incredible Location
- Secure Allocated Parking
- Share of Freehold
- Chain Free



## Shad Thames, SE1

Boasting stunning wooden beams and exposed brick work, the living space spans almost 40ft offering ample space for living and dining.

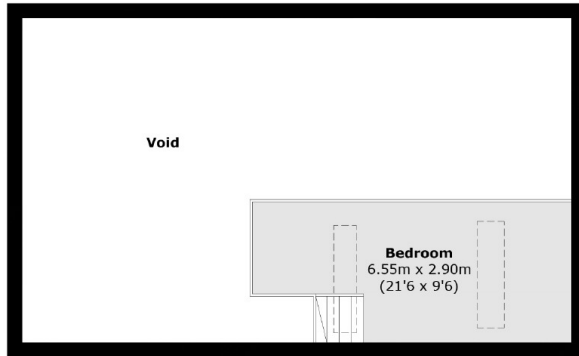
The flat also offers two large double bedrooms, one with an en-suite and an additional family bathroom. There is also ample storage throughout the flat which is so beautifully decorated.

Wheat Wharf Apartments is a stunning Warehouse conversion offering lift access and secure parking. The development is situated moments from the river.

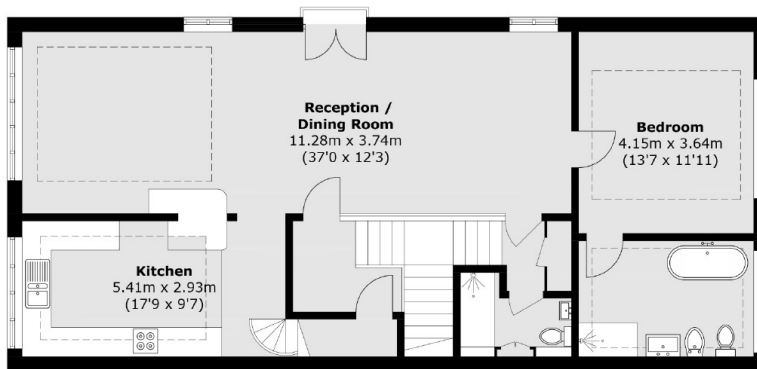




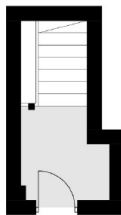
# Shad Thames, London, SE1



**Mezzanine**



**Fourth Floor**



**Third Floor**

Total area (approx.): 123.9 sq. m (1,333.5 sq. ft)  
(Including Mezzanine / Excluding Void))