



Rotherhithe Street, SE16

£550,000

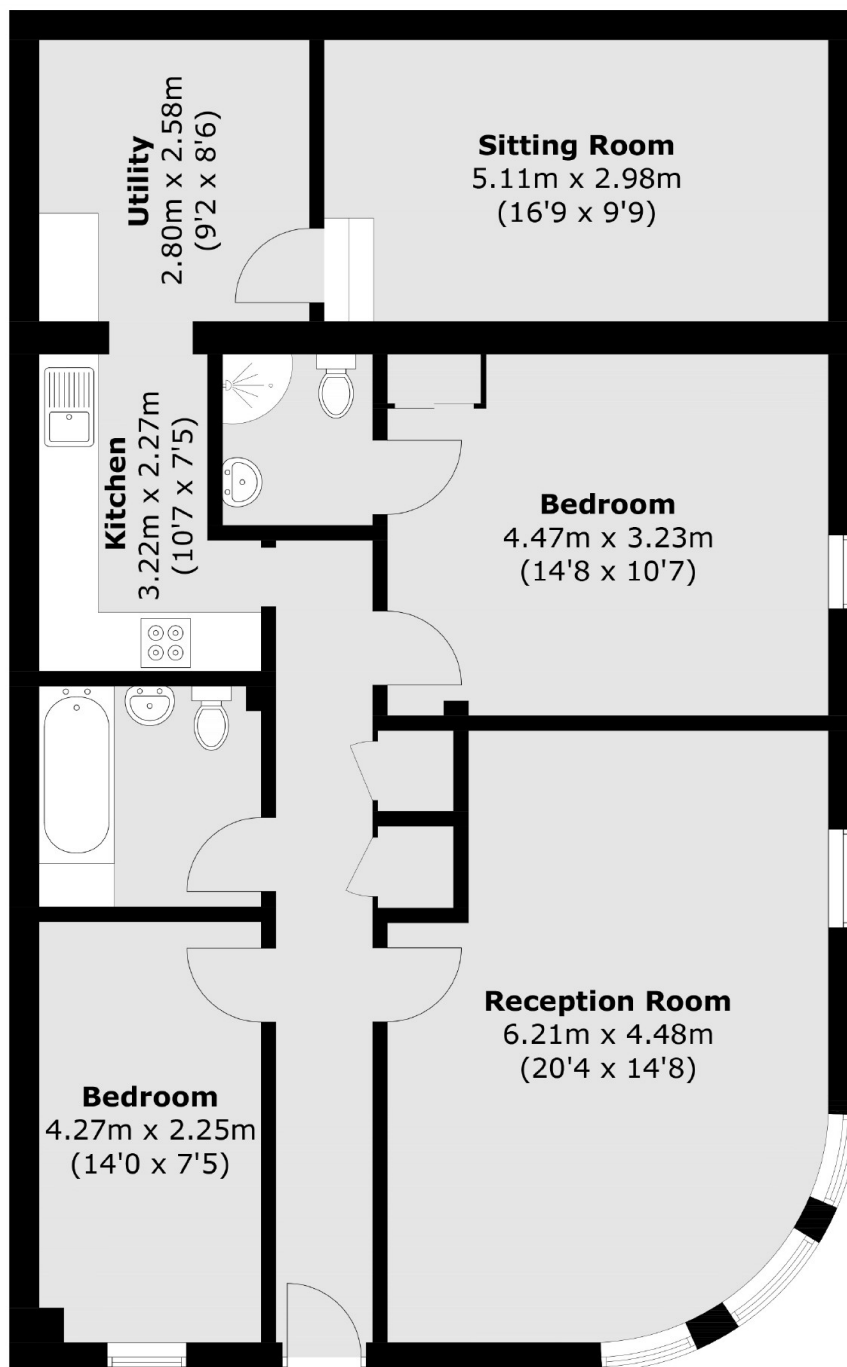
Located in this sought after riverside development and arranged over 1,000 sqft, this two double bedroom flat is immaculately presented throughout and boasts two double bedrooms, two bathrooms, utility room and garage.

The apartment is located only 0.7 miles from Rotherhithe station and 0.8 miles from Canada Water station. The development is surrounded by shops, café's, riverside pubs and restaurants.

Features

- Two Double Bedrooms
- Two Bathrooms
- Chain Free
- Fantastic Condition
- Riverside Location
- Garage Parking

Rotherhithe Street,
London, SE16



Total area (approx.): 104.6 sq. m (1,125.9 sq. ft)

Dexters

London Bridge
54 Borough High Street
London
SE1 1XL
Sales
020 7650 5 100

Energy Rating: . We aim to make our particulars both accurate and reliable. However they are not guaranteed; nor do they form part of an offer or contract. If you require clarification on any points then please contact us, especially if you're traveling some distance to view. Please note that appliances and heating systems have not been tested and therefore no warranties can be given as to their good working order.

 **RICS** | Regulated
Estate Agent
and Letting Agent

[dexters.co.uk](https://www.dexters.co.uk)