



Spa Road, SE16

£650,000

OIEO £650,000 - Situated in a very sought after development, this three double bedroom flat is in fantastic condition and boasts a large open plan kitchen and living space, two modern bathrooms, ample storage and a huge private terrace.

Pollard House is 0.4 miles from Bermondsey Underground offering excellent transport links to Canary Wharf and the rest of London. Maltby Street Market, Bermondsey Street & Shad Thames are all moments away.

Features

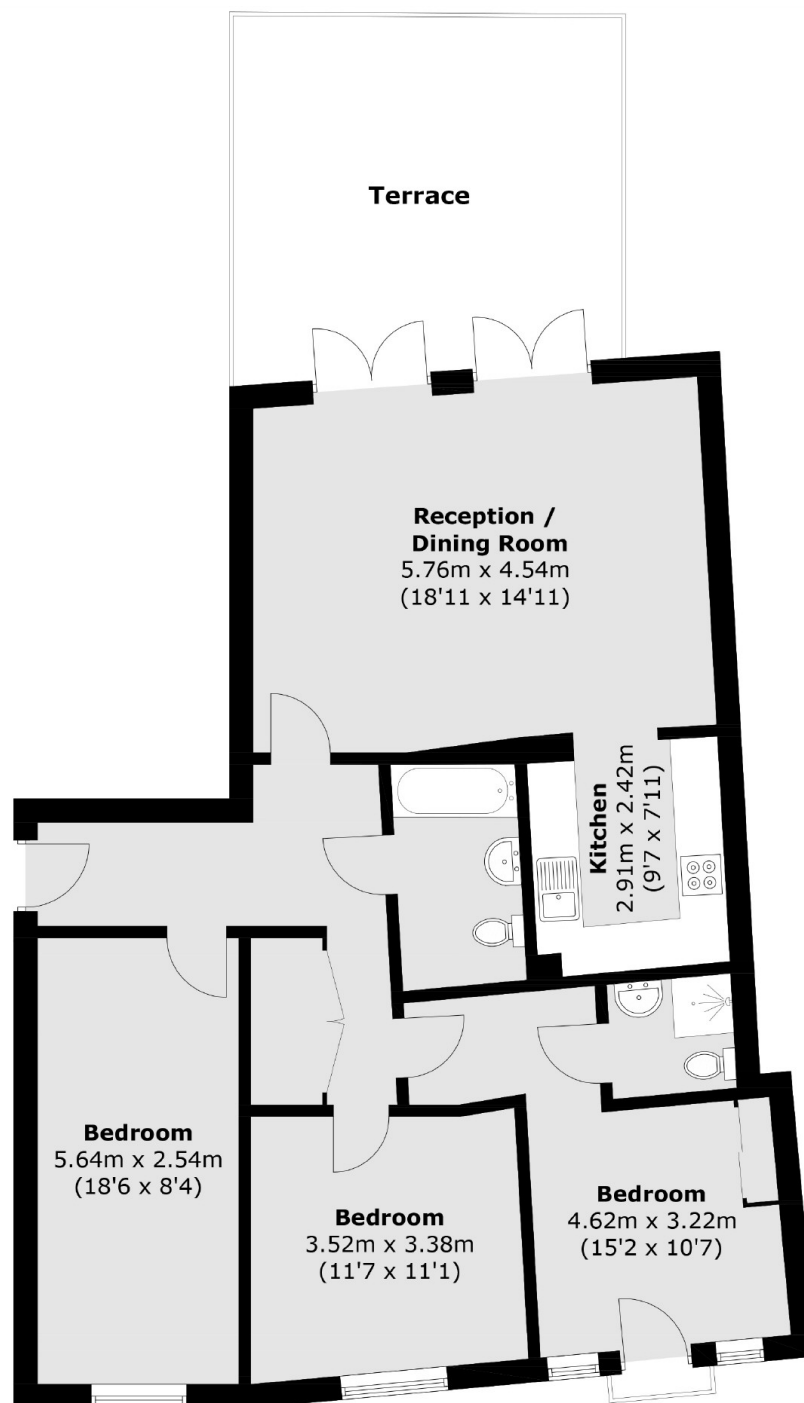
- Three Double Bedrooms
- Two Bathrooms
- Private Terrace
- Communal Garden
- Immaculate Condition
- Chain Free
- OIEO £650,000



Spa Road, SE16



Spa Road, London, SE16



Total Internal Area (approx.): 94.3 sq. m (1,015.0 sq. ft)
Terrace: 22.0 sq. m (236.8 sq. ft)

Dexters

London Bridge
54 Borough High Street
London
SE1 1XL
Sales
020 7650 5 100

Energy Rating: B. We aim to make our particulars both accurate and reliable. However they are not guaranteed; nor do they form part of an offer or contract. If you require clarification on any points then please contact us, especially if you're traveling some distance to view. Please note that appliances and heating systems have not been tested and therefore no warranties can be given as to their good working order.

 **RICS** | Regulated
Estate Agent
and Letting Agent

dexters.co.uk