



## Earls Way, SE1

£1,900,000

Located in the luxurious One Tower Bridge riverside development, this two double bedroom flat is in stunning condition and boasts a large open plan kitchen living space, two modern bathrooms, walk in wardrobe, private balcony and secure parking.

Located only 0.2 miles from London Bridge station, Sandringham House, just off the River Thames, offers excellent transport links to anywhere across the capital.

### Features

- Two Double Bedroom
- Gym, Spa and Pool Facilities
- 24 Hour Concierge
- Incredible Location
- Fantastic Condition
- Secure Underground Parking
- Valid EWS1 Form



## Earls Way, SE1

The flat is beautifully designed throughout with a fully fitted kitchen with top of the range built appliances, fully tiled bathrooms a private balcony.

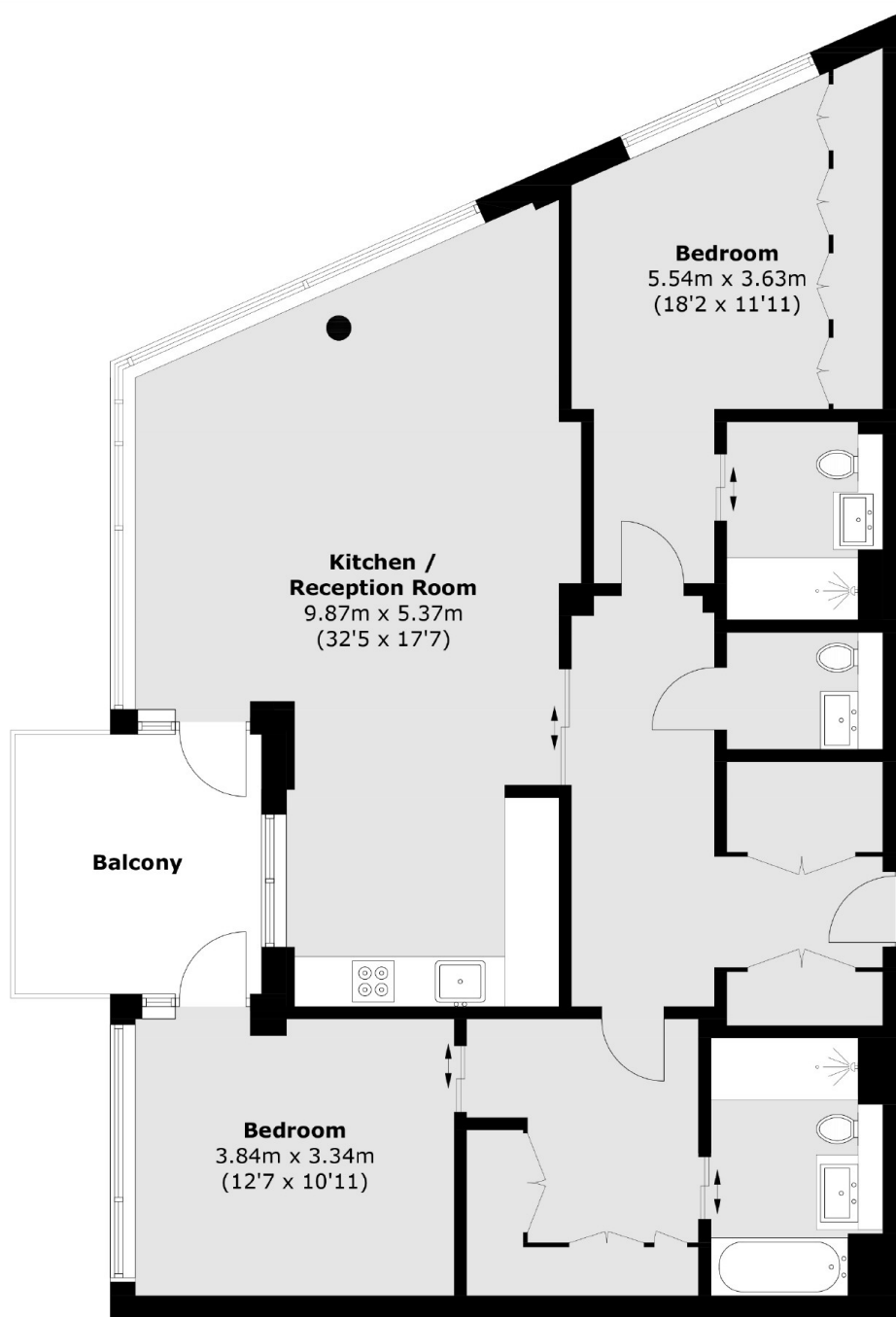
The riverside development offers 24 hour concierge, state of the art gym, swimming pool and spa facilities and beautiful communal areas.

Surrounded by excellent restaurants cafés and delis, the development is overlooking Tower Bridge, The Tower of London, St Pauls Cathedral and The City skyline.





Earls Way,  
London, SE1



Total area (approx.): 111.1 sq. m (1,195.9 sq. ft)  
Balcony: 9.4 sq. m (101.2 sq. ft)

**Dexters**

London Bridge  
54 Borough High Street  
London  
SE1 1XL  
Sales  
020 7650 5 100

Energy Rating: C. We aim to make our particulars both accurate and reliable. However they are not guaranteed; nor do they form part of an offer or contract. If you require clarification on any points then please contact us, especially if you're traveling some distance to view. Please note that appliances and heating systems have not been tested and therefore no warranties can be given as to their good working order.

 **RICS** | Regulated  
Estate Agent  
and Letting Agent

[dexters.co.uk](https://www.dexters.co.uk)