



## Rainbow Quay, SE16

### £550,000

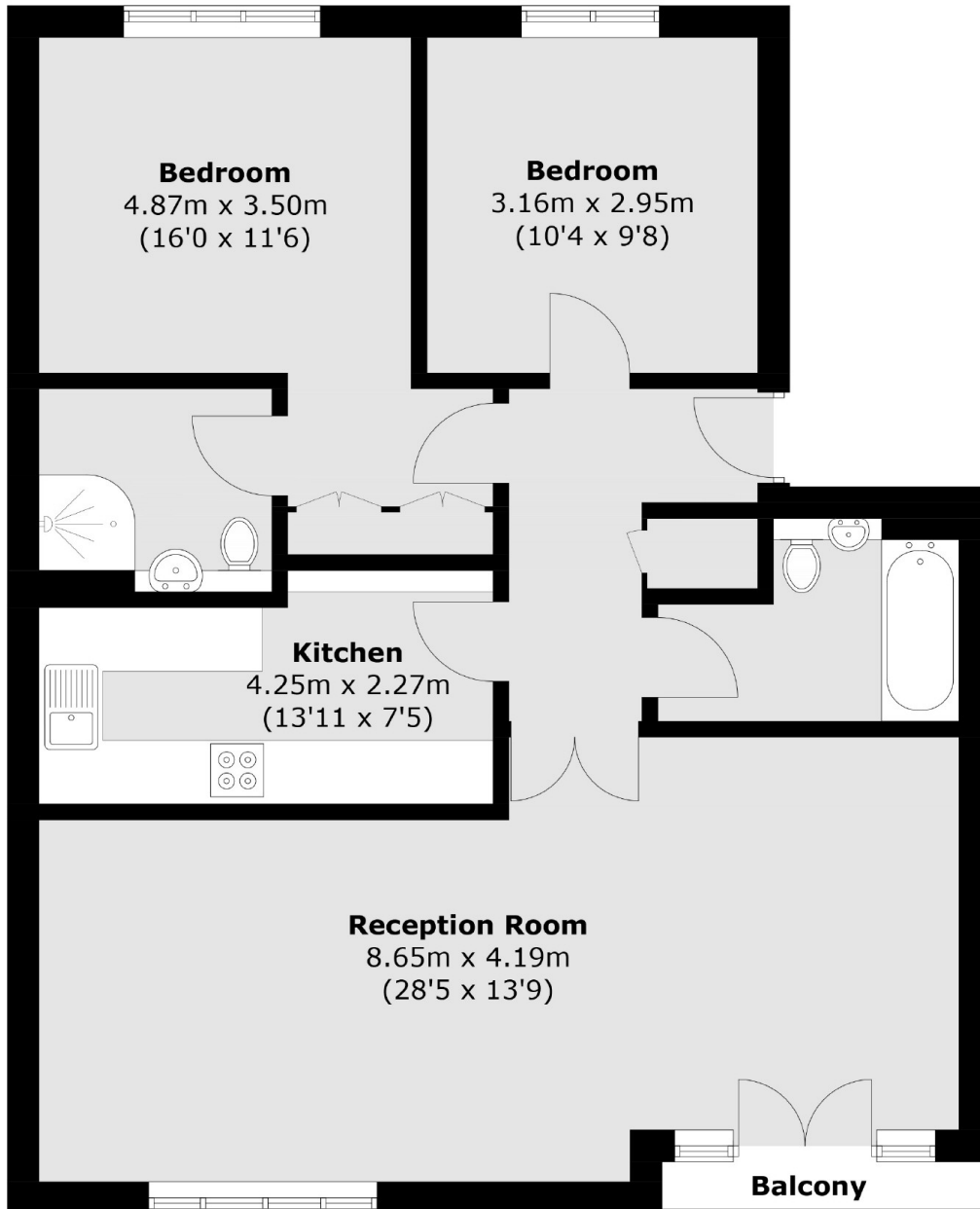
With stunning views of Canary Wharf and the water, this two double bedroom flat boasts a large living space, separate kitchen, two bathrooms, secure parking space, a share of the freehold and ample storage.

Rainbow Quay is located 0.6 miles from Surrey Quays station and 0.7 miles from Canada Water station. The Thames Clipper is also moments away offering excellent transport links to all of London.

### Features

- Two Double Bedrooms
- Spectacular Views
- Share Of The Freehold
- Great Transport Links
- Secure Allocated Parking
- No Chain
- Offers Over £550,000

# Rainbow Quay, London, SE16



Total area (approx.): 83.5 sq. m (898.8 sq. ft)  
Balcony area: 1.3 sq. m (14.0 sq. ft)

## Dexters

Canada Water  
Montreal House  
Surrey Quays Road  
London  
Sales  
020 7650 5144

Energy Rating: C. We aim to make our particulars both accurate and reliable. However they are not guaranteed; nor do they form part of an offer or contract. If you require clarification on any points then please contact us, especially if you're traveling some distance to view. Please note that appliances and heating systems have not been tested and therefore no warranties can be given as to their good working order.

 **RICS** | Regulated  
Estate Agent  
and Letting Agent

[dexters.co.uk](https://www.dexters.co.uk)