



## Rainbow Quay, SE16

£575,000

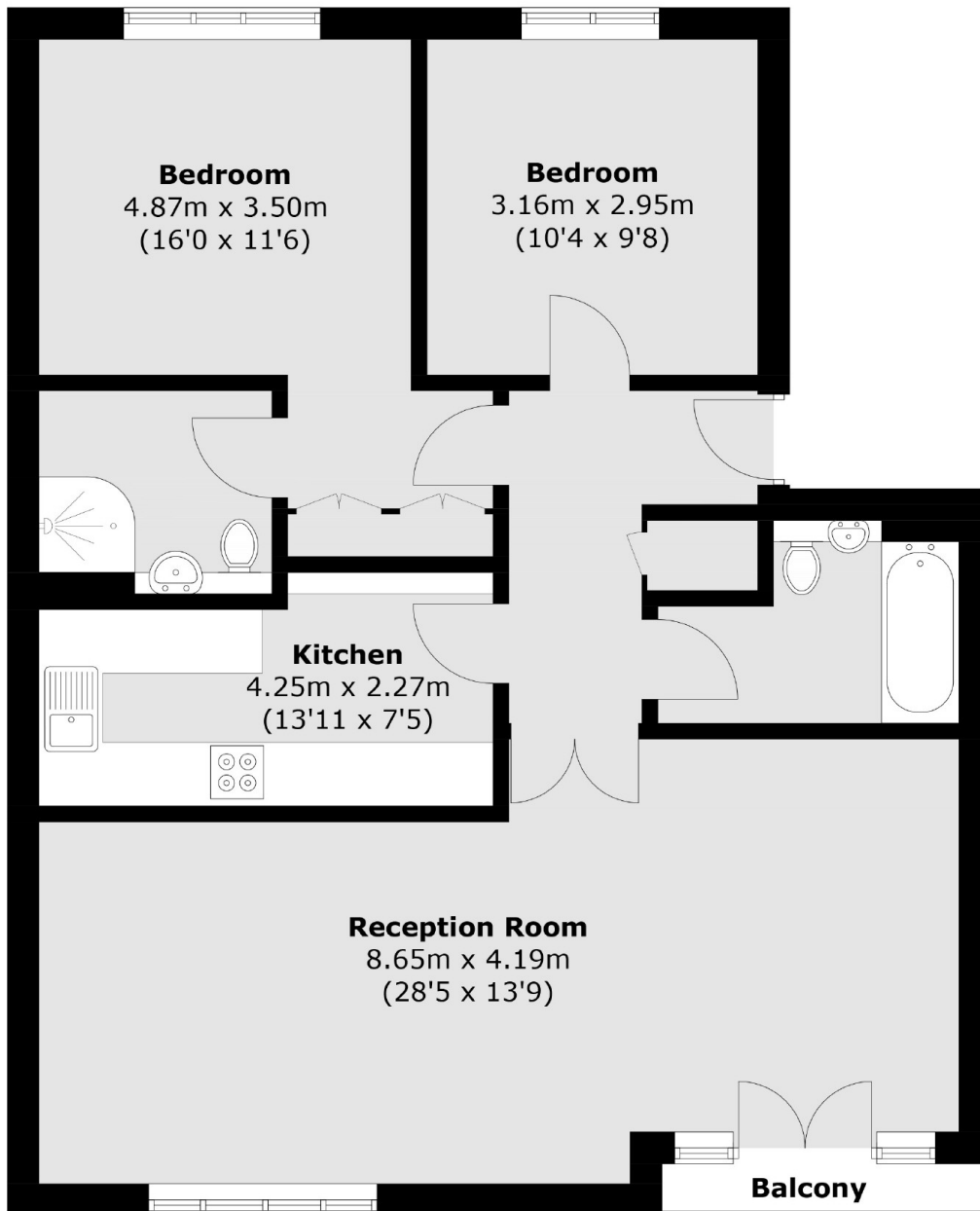
With stunning views of Canary Wharf and the water, this two double bedroom flat boasts a large living space, separate kitchen, two bathrooms, secure parking space, a share of the freehold and ample storage.

Rainbow Quay is located 0.6 miles from Surrey Quays station and 0.7 miles from Canada Water station. The Thames Clipper is also moments away offering excellent transport links to all of London.

### Features

Two Double Bedrooms  
Spectacular Views  
Share Of The Freehold  
Great Transport Links  
Secure Allocated Parking  
No Chain

# Rainbow Quay, London, SE16



Total area (approx.): 83.5 sq. m (898.8 sq. ft)  
Balcony area: 1.3 sq. m (14.0 sq. ft)

## Dexters

London Bridge  
54 Borough High Street  
London  
SE1 1XL  
Sales  
020 7650 5 100

Energy Rating: . We aim to make our particulars both accurate and reliable. However they are not guaranteed; nor do they form part of an offer or contract. If you require clarification on any points then please contact us, especially if you're traveling some distance to view. Please note that appliances and heating systems have not been tested and therefore no warranties can be given as to their good working order.

 **RICS** | Regulated  
Estate Agent  
and Letting Agent

[dexters.co.uk](https://www.dexters.co.uk)