



Abbey Street, SE1

£700,000

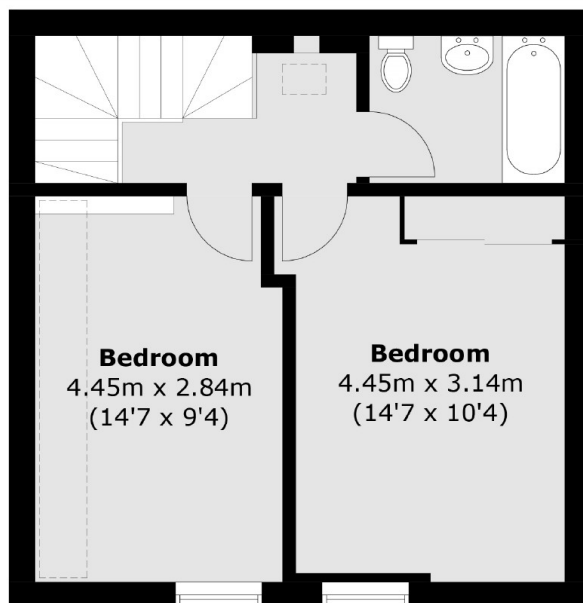
A delightful two storey house with a spacious open plan living room and kitchen, plus a WC on the ground floor, leading out onto a fantastic private garden. There are two generous double bedrooms and a family bathroom on the upper floor, plus additional loft storage.

Abbey street is enviably located with easy access to Bermondsey Street and London Bridge, along with Maltby Street Market, Bermondsey and the riverside. The transport links are excellent and there are numerous local amenities and attractions.

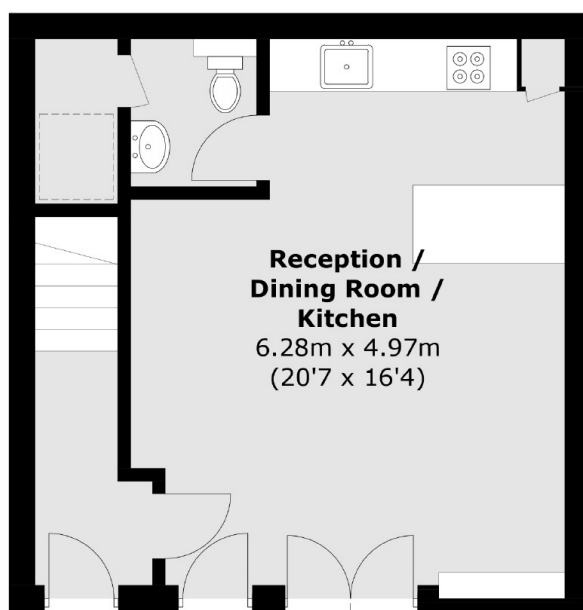
Features

- Two Storey House
- Share of Freehold
- Private Garden
- Two Double Bedrooms
- Large Windows & High Ceilings
- High Quality Finish
- Chain Free

Abbey Street, London, SE1



First Floor



Ground Floor

Total area (approx.): 77.5 sq. m (834.2 sq. ft)

Dexters

London Bridge
54 Borough High Street
London
SE1 1XL
Sales
020 7650 5 100

Energy Rating: C. We aim to make our particulars both accurate and reliable. However they are not guaranteed; nor do they form part of an offer or contract. If you require clarification on any points then please contact us, especially if you're traveling some distance to view. Please note that appliances and heating systems have not been tested and therefore no warranties can be given as to their good working order.

 **RICS** | Regulated
Estate Agent
and Letting Agent

dexters.co.uk