



Shad Thames, SE1

£1,000,000

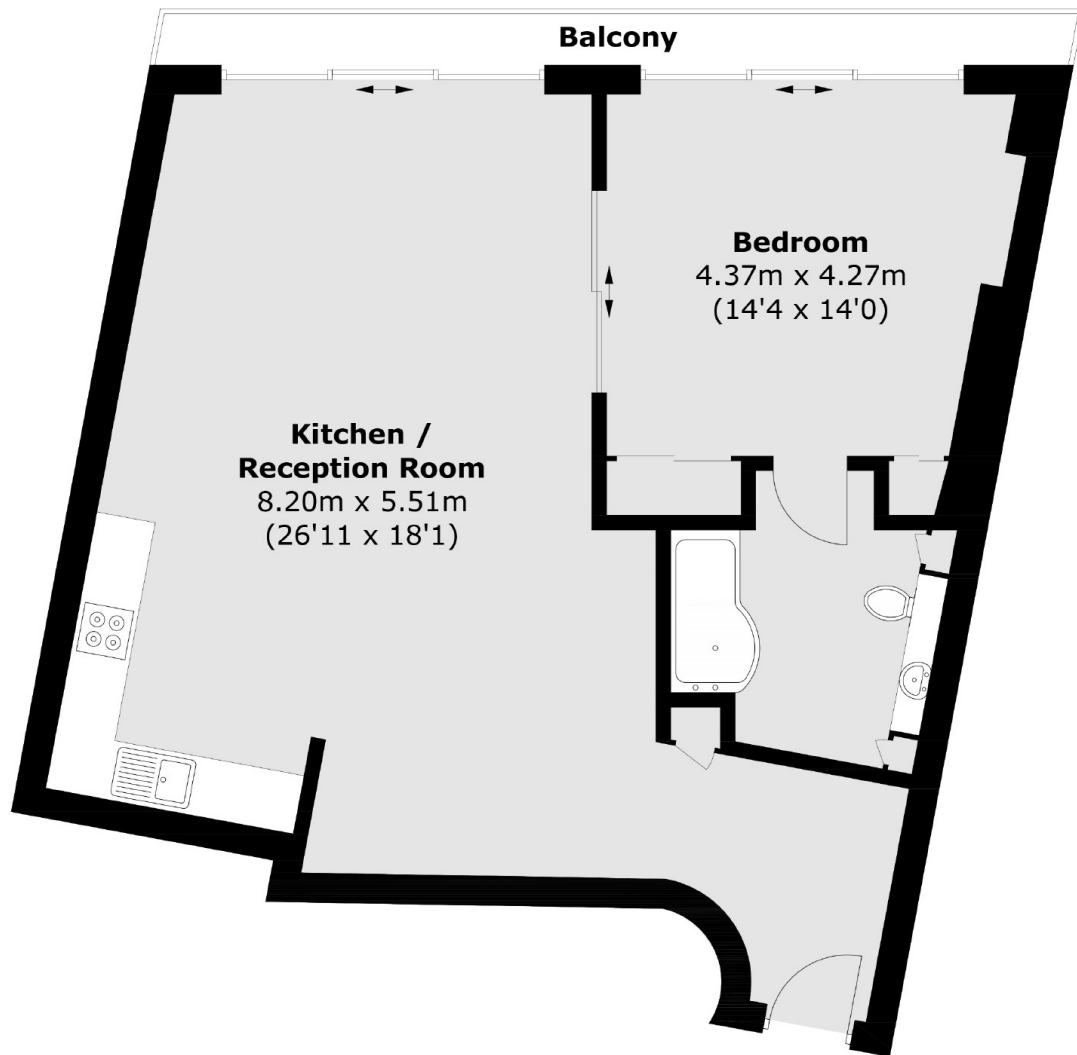
Offering incredible views of Tower Bridge, The River and The City, this stunning apartment boasts a large open plan kitchen and living space, modern bathroom, private balcony, ample storage plus secure parking and concierge facilities.

Anchor Brewhouse is located in the heart of Shad Thames and is surrounded by a wide range of shops and restaurants. London Bridge Station is just 0.3 miles away.

Features

- One Bedroom
- Private Balcony
- Share of Freehold
- Stunning Views
- Concierge Facilities
- Riverside Development
- Secure Parking

Shad Thames,
London, SE1



Total area (approx.): 70.8 sq. m (762.1 sq. ft)
Balcony : 4.8 sq. m (51.7 sq. ft)