



Spa Road, SE16

£500,000

Located in this sought after development, this two double bedroom flat is in stunning condition and offers ample living space, two bathrooms, open plan- kitchen living, lots of storage and a large private terrace.

Aulay House is located just 0.3 miles from Bermondsey station and is surrounded by a vast range of artisan shops, cafés, restaurants and trendy food markets.

Features

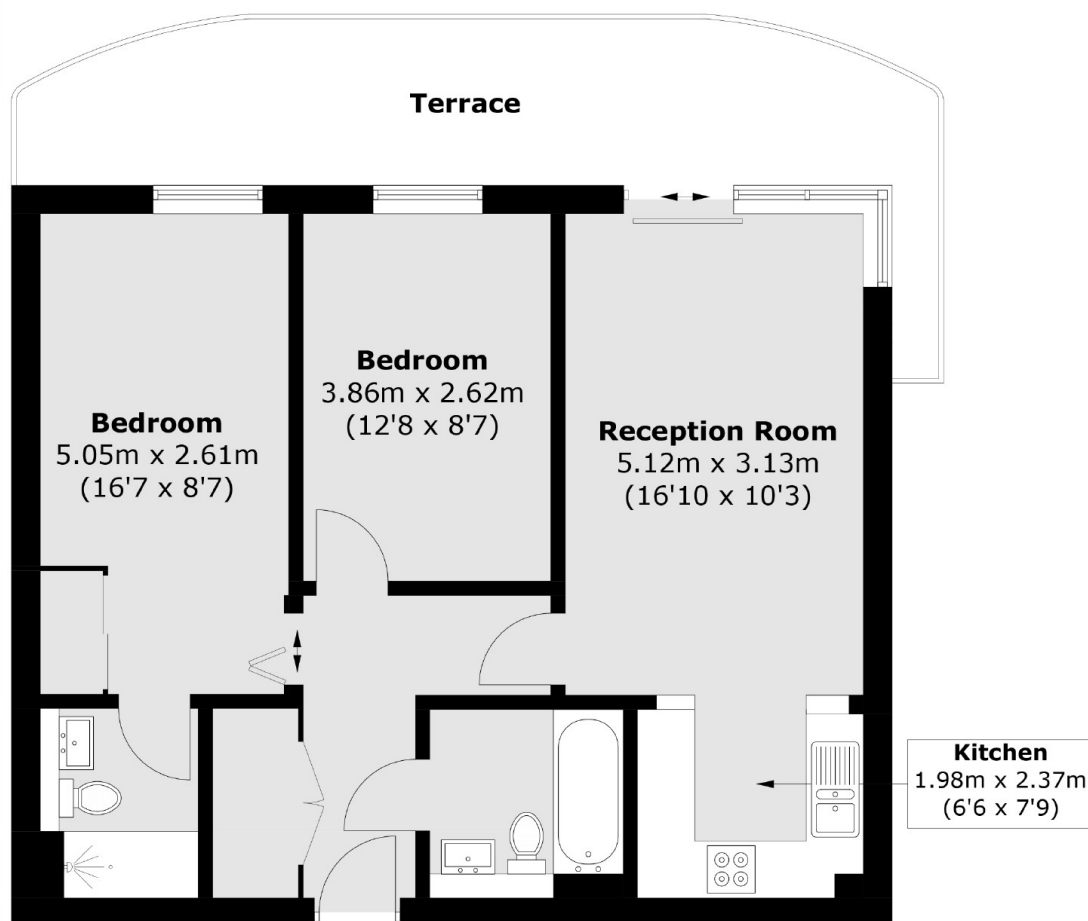
- Two Double Bedrooms
- Excellent Condition
- Ample Storage
- Private Terrace
- Great Location
- Chain Free
- Offers in excess of £500,000



Spa Road, SE16



Spa Road, London, SE16



Ground Floor

Total area (approx.): 62.5 sq. m (672.7 sq. ft)
Terrace : 16.5 sq. m (177.6 sq. ft)